



Foodbank of Santa Barbara County

COMMUNITY IMPACT

Fiscal Year 2023



TRANSFORMING HUNGER INTO HEALTH

FROM OUR CEO

We did it! Together, we made the Foodbank's Sharehouse and Nutrition Resource Center a reality. Your partnership has enabled the Foodbank to turn an empty warehouse and office building into the beating heart for food and health in south county. **This major accomplishment could not come at a more crucial time.**



The Foodbank has seen a 40% increase in people needing assistance since last year. During the 2023 Fiscal Year, the Foodbank provided nutrition and education to **more than 230,000 individuals** – 40% of whom were children.

Meeting this demand would be impossible without Foodbankers like you. Together, we are resilient. We are determined. And, we are fulfilling our mission to ensure our neighbors have the nutrition and education they need to thrive.

Thank you for giving food, education, help and hope to our community.

Erik Talkin

CEO, Foodbank of Santa Barbara County

P.S. Turn to page 17 to learn more about our five-year strategic plan.

For people who are passionate about food, health, and community resilience, this is an exciting time to be involved with Foodbank. I am grateful for the opportunity to serve as Board Chair, working together with the staff, volunteers, agency partners, donors, families and individuals who share the common goal of a nutrition-secure future for everyone in Santa Barbara County.

Nutrition security is about much more than just getting enough calories for survival. It means that all members of our community have consistent and equitable access to healthy, safe, affordable foods essential to optimal health and well-being. In my career as a Registered Dietitian and as a faculty member at Allan Hancock College, I have seen the difference that nutrition security makes. Well-nourished people build healthier lives and healthier communities.

The Foodbank is uniquely positioned as a nutrition hub, drawing together resources, partnerships and

people embracing the mission to move all of our community from hunger to health. In this Impact Report, you will see the tremendous achievements of the past year, and you'll catch a glimpse of the road ahead.



If you are already part of the Foodbank team, thank you! Your time, talents, and contributions are changing lives every day. If you haven't yet connected with us, jump in! There is a place for you to put your own passions for food and health into action in our community. Let's build that bright future together.

Christine Bisson, MS, RD

Chair, Board of Trustees

OUR MISSION

The Foodbank of Santa Barbara County's mission is to end hunger and transform the health of Santa Barbara County through good nutrition.

With nutrition education, disaster preparedness, community resilience and environmental sustainability at the forefront of our mission, we are working to solve the underlying causes of hunger in Santa Barbara County.

OUR VISION

A healthy and food secure Santa Barbara County

WHAT IS FOOD INSECURITY?

Food insecurity is a lack of consistent access to enough food for every person in a household to live an active, healthy life, often because of a lack of economic resources.

1 in 4
people served

in Santa Barbara County

230,593 Unduplicated individuals served up 40% from FY22

92,122 Children

21,153 Older adults

11,467 Unhoused people

The Foodbank
of Santa Barbara
County provided:

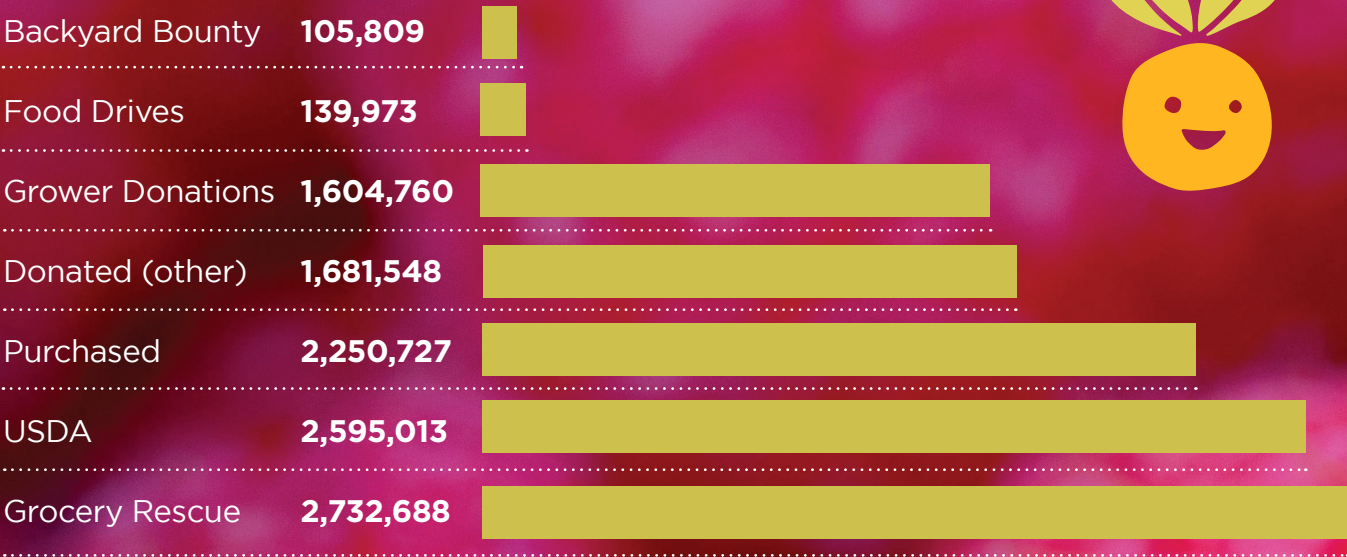
10,884,809
pounds of healthy food

8,503,757
meals served

\$14,479,254
food value



WHERE DOES OUR FOOD COME FROM?

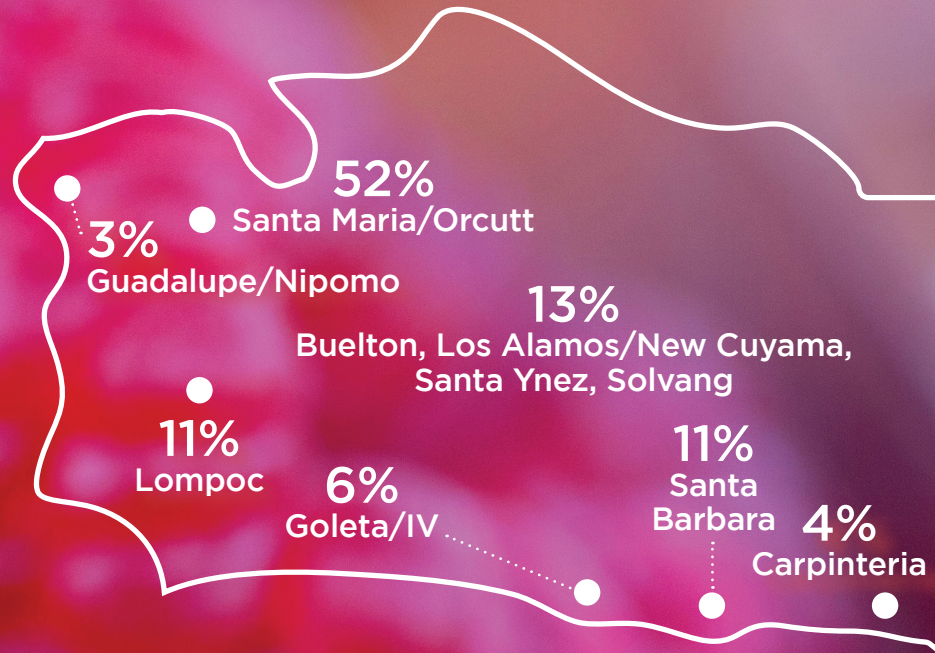


The Foodbank of Santa Barbara County works with over 200 Partner Agencies to distribute nutritious food throughout the county.

Our Top 10 Distribution Partners	
Pacific Christian Angel Food	1,020,789
Unity Shoppe	401,868
Catholic Charities-Lompoc	390,058
Catholic Charities-Santa Barbara	377,442
Buellton Senior Center	353,033
Orcutt Presbyterian Church	282,508
Bethania Lutheran Church	237,056
PATH	211,231
People Helping People	208,320
Allan Hancock College	199,267

“ Our partners are very important in distributing food to our neighbors in Santa Barbara County. The Foodbank could not do this work without these valuable partners. I like taking care of the neighbors in need. ” —**Jamie Diggs, Partner Services Senior Manager**

WHERE DOES IT GO?

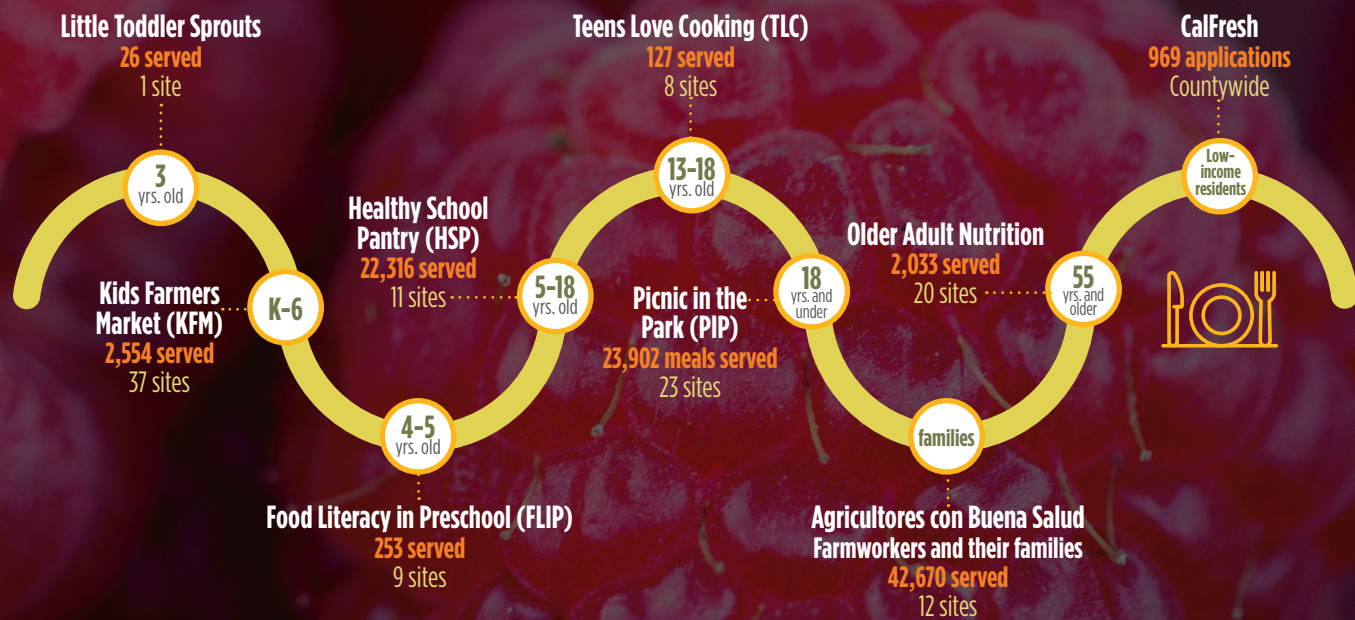


VOLUNTEER HOURS

1,908
Total Volunteers

29,899
Total Volunteer Hours

Foodbank Programs From Toddler to Senior



“ Food and nutrition is central to our well-being. Connecting people with whole, health-supporting foods, recipes that honor our cultures and knowledge that can impact a person's decisions throughout their lifetime is a responsibility I don't take lightly. At the Foodbank, my work centers around justice, access and education, and I am so honored to use my training and personal passion to support my community in Santa Barbara County. ”

—Lacey Baldivez, PhD, Chief Impact Officer

PROGRAM ACHIEVEMENTS

Agricultores con Buena Salud

Now in its third year, Agricultores con Buena Salud (Healthy Farmworkers) provides local agricultural workers and their families with healthy and culturally-relevant food and access to nutrition education. We surveyed clients to determine preferred cultural food items, and we procured those foods for distribution through a partnership with the California Association of Food Banks. The Foodbank has expanded the program to serve farmworkers every month at 12 housing locations and farms (to eliminate transportation barriers) throughout north and south county. Also our most attended program, Agricultores con Buena Salud provided nutrition and education to 42,670 of our neighbors this year.



Serves: **Farmworkers and families**

9
FY22 Sites

12
FY23 Sites

44%
increase



Little Toddler Sprouts

Our newest program, launched in the fall of 2022, aims to educate our youngest neighbors. Little Toddler Sprouts stemmed from the need for a food literacy curriculum that would engage preschoolers (under the age of four) at daycare. Our Impact Team stepped up to the plate and launched Little Toddler Sprouts last year at the Carpinteria Children's Project.

Little Toddler Sprouts emphasizes physical participation, including singing, nature-based re-enactments and tasting fruits and vegetables. To further promote food literacy, the Foodbank has created three books and flashcards (in both English and Spanish) for the program.



Serves: **Children**

24
FY22 Sites

34
FY23 Sites

30%
increase

Healthy School Pantry

Every month, Healthy School Pantry provides CalFresh outreach, health screenings and nutrition and physical education to children and their families at their child's school. Participating families leave with fresh produce, pantry staples and a recipe for the food received.

Healthy School Pantry had a 17% increase in attendance this year, serving 22,316 people at 75 distributions. The Santa Maria Fairpark became a new site for families attending the Santa Maria Bonita School District. We also added partnerships with the Family Service Agency and Sansum Diabetes Research Institute, as well as Spanish social media outreach at all sites.



Serves: **Low-income neighborhoods**

6
FY22 Sites

7
FY23 Sites

17%
increase



Older Adult Nutrition Program

The Older Adult Nutrition program grew by 30% this year, with three new sites in North County and one new site in South County. Our newest sites include Mussel Senior Center, Casa del Rio, West Cox Cottages and Carpinteria Children's Project.

The program provides two bags of groceries and fresh produce bimonthly to seniors, as well as cooking classes, live nutrition education and visits from RDNs through a partnership with the SBC Public Health Department. Older Adult Nutrition served 2,033 people this year.



Serves: **60 + years of age
or 55+ with a disability**

14
FY22 Sites

23
FY23 Sites

50%
increase



The Foodbank received the Excellence in Service Award at the 2023 South Coast Business & Technology Awards in June. Our CEO, Erik Talkin, received the award on behalf of our organization at the awards banquet, which benefited the Scholarship Foundation of Santa Barbara.

The Excellence in Service Award, sponsored by U.S. Bank, is given to a business or nonprofit organization that has consistently provided outstanding customer or community service. Honorees in this category have leadership teams committed to innovation and creative problem-solving and embrace public service as a fundamental value.

DISASTER RESPONSE

Staff Spotlight: Anthony Rodriguez *Operations & Disaster Services Specialist*

When it comes to natural disasters, Anthony Rodriguez has just about seen it all. During the Thomas Fire and Debris Flow in 2018, he opened the call center for the Office of Emergency Management.

Anthony is the co-founder of the Santa Barbara Response Network, a non-profit organization that mobilizes volunteers with training in psychological first aid. He is responsible for activating the Disaster Feeding Task Force, a multi-agency Disaster Feeding Plan. He also serves as co-chair for Safeguard the Children, a program that supports education and training to help prevent child abuse.



Since joining the Foodbank in 2019, Anthony has taken his disaster preparedness skills and experiences to new heights. He started our CERT program (Community Emergency Response Team), a group of volunteers who educate people about disaster preparedness. Anthony trains volunteers how to work in emergency services and handle disaster response. To date, he has led four graduating classes with a total of 105 CERT graduates.

Anthony's experiences, knowledge and expertise in disaster resilience are unrivaled. He has secured the Foodbank's position as a county resource not only for providing food, but also for planning and strategizing during emergencies.

The Foodbank is the primary source of food for the county in the event of disaster. The Foodbank also serves as co-lead for the Multi-Agency Disaster Feeding Plan.

Highlights

- ✓ The Foodbank is one of only five national food banks within the Feeding America umbrella with a Disaster Services Specialist
- ✓ On March 5th, the Foodbank completed the fourth CERT training with 22 graduates
- ✓ From January to March 2023, Foodbank CERTs collectively spent nearly 1,900 hours in the Emergency Operation Center (EOC) Call Center, fielding over 1,130 calls
- ✓ The Foodbank's CERT Program is a FEMA-certified program
- ✓ We are the only foodbank to have a Community Emergency Response Team

Our distribution numbers reflect that there are more individuals in need of food assistance now than at the height of the pandemic.



A PERFECT STORM

In January, our county was hit hard by a series of catastrophic storms and floods that caused a major federal disaster. Our friends and neighbors working in agriculture, construction, hospitality and landscaping lost work hours and paychecks. Damage to crops delayed and even canceled harvests, leaving many households without income for months.

In the following months, grocery prices continued to rise as COVID-era government support programs expired.

Since the pandemic began, CalFresh – the supplemental program that helps low-income families afford nutritious food – provided Emergency Allotments to those in need. In February, these Emergency Allotments abruptly expired. The average household lost approximately \$200 of support per month.

As of January 2023, nearly 33,000 households in Santa Barbara County needed the assistance of CalFresh to survive. When economic multiplier effects

are included, the monthly loss in nutritional support (and economic activity) in Santa Barbara County will total \$8.16 million. That's **\$97.92 million annually.**

Due to the expiration of CalFresh Emergency Allotments, the end of Pandemic EBT, inflated grocery prices and lost wages, the Foodbank saw a **20% increase in need.**

Our distribution numbers reflect that there are more individuals in need of food assistance now than at the height of the pandemic.



“ We wouldn’t be able to meet the current demand and fill the projected gap without the support of our donors. Thanks to the generosity of The Balay Ko Foundation, all donations up to \$500,000 were matched through June 1st, 2023, providing a total of \$1,000,000 in support. ”

—Laurel Alcantar, Associate Director of Development

ENVIRONMENTAL SUSTAINABILITY

Environmental sustainability has always been a top priority for the Foodbank. As an integral part of the Central Coast food system, we strive to reduce greenhouse gas emissions and eliminate food waste in Santa Barbara County.

On Saturday, May 13th, the Foodbank partnered with the National Association of Letter Carriers (NALC) for the **Stamp Out Hunger Food Drive**. More than **85,000 pounds of food** were collected by dedicated letter carriers across our county!

This impressive total is nearly double the donations received in 2019.

Food Waste

According to Feeding America, **up to 40% of all food grown in the US is wasted**. When food breaks down anaerobically in a landfill, it produces methane, a greenhouse gas 25 times more potent than carbon dioxide.

The Foodbank's largest sustainability initiatives, our Backyard Bounty and Grocery Rescue programs play an integral role in the elimination of food waste in our county.



■ Grocery Rescue

This fiscal year, our Grocery Rescue program salvaged **2.7 million pounds** of perishable goods (that would have otherwise been discarded) from **62 grocery stores**. The implementation of California's new food waste law (SB-1383) is prompting an expansion of our Grocery Rescue program. We are exploring ways to utilize this influx of food, including the prep and distribution of prepared meals.

■ Backyard Bounty

Backyard Bounty is the Foodbank's volunteer-powered gleaning program. Since the program began in late 2007, Foodbank volunteers have harvested over 1.5 million pounds of fruits and vegetables from local properties. This year, we gleaned **105,809 pounds** of fresh produce for our neighbors in need!

The Foodbank ensures that no rescued food goes to waste. Food that cannot be distributed for human consumption is distributed to local composting operations, pig farms and horse farms. This year, we were able to save 130,000 pounds of food from landfill.

Sharehouse

When the Sharehouse is operational, it will allow us to accept between 50,000 and 80,000 pounds of additional fresh produce every week, redirecting that produce directly to people's plates. The Sharehouse will also reduce our emissions due to the increased capacity for storage of food in our existing south county facility. Currently, most of our food must go to our Santa Maria Warehouse for storage. The Sharehouse will save our trucks nearly 40,000 miles of transportation emissions each year, elongating the lifecycle of our vehicles.



Energy



The Foodbank also reduces emissions by running on clean, renewable energy. Our North County warehouse and offices operate on solar power. The new South County Sharehouse will also be powered by solar.

.....
Of the 11 million pounds the Foodbank received, only 197,425 pounds (1.9%) of food was unfit for distribution.

- 1.2 % was composted
 - 0.6% of total food went to landfill
 - 0.1% became feed for livestock
-

105,809 pounds
of produce gleaned in FY23
32% more than the 80,000 goal



COMMUNITY FUNDRAISERS



Table of Life

The Foodbank's 11th annual Table of Life celebration honored Patricia Bragg and La Centra-Sumerlin Foundation, whose leadership and generosity provided the foundation for our new Sharehouse. The outdoor garden party featured a farm-to-table dinner menu from Duo Catering, wine from Fess Parker Winery & Vineyard and music from the Summerland Trio. KEYT-TV's John Palmintieri presided as the evening's master of ceremonies. Thank you to our gracious hosts Steve and Cindy Leonard for opening their beautiful home for this event!

End Hunger Games

The 2022 End Hunger Games Corporate Challenge kicked off on November 1st with eight local companies participating in the month-long competition. Teams competed to see who could raise the most funds, donate the most food, provide the greatest number of volunteer hours and offer the most social media attention to our shared mission of turning hunger into health. Participants of the 2022 End Hunger Games included Amazon, CIO Solutions, Deckers, Field to Table Catering, Impact.com, Master Clean USA, Raytheon and Yardi. The event raised \$41,773.





The Foodbank teamed up with Jack Johnson on his 2022 Summer Tour as an All At Once Non-Profit Partner! **All At Once is Jack's social action network connecting nonprofits with people who want to take action and give back to their community.** All At Once promotes sustainable & equitable food systems, plastic free initiatives, healthy watersheds and more!

Empty Bowls

Lompoc:
July 27th
17th Annual

.....

350+
Attendees

.....

\$60,000+
Money Raised

Our most successful one yet.

Santa Maria:
October 26th
21st Annual

.....

550+
Attendees

.....

\$45,000+
Money Raised

Santa Barbara:
November 13th
25th Annual

.....

Over **800+**
Attendees

.....

\$100,000+
Money Raised



Holiday Distributions

At our November and December special holiday distributions, we served a record number of individuals in our county. The Foodbank provided a Thanksgiving meal for 5,167 of our North and South County neighbors, distributing 5,852 lbs of turkey and 2,750 lbs of chicken. Our Fill the Foodbank food drive on Saturday, November 19, brought in 1,600 lbs of much-needed food for the holidays. December's holiday distributions saw a record high of **5,864 individuals served**.

HUNGER RELIEF CHAMPIONS

Foodbank Hunger Relief Champions donate more than 30,000 pounds of fresh produce in a single year. These champions play a pivotal role in contributing to positive health outcomes countywide.



Our Grocery Rescue Partners

Albertsons, Aldi, Big Lots, Costco, Dollar General, Food Maxx, Foods Co, Gelson's Markets, Gopuff, Grocery Outlet, La Tolteca, Lassens Natural Foods, Montecito Village Grocery, New Frontiers Natural Marketplace, Ralphs, Smart & Final, Spencer's Fresh Markets, Sprouts Farmers Market, Target, Trader Joe's, Vallarta Supermarkets, Valley Fresh Market, Vons, Walmart and Whole Foods Market.



In December, Congressman Salud Carbajal secured nearly \$17 million in direct federal funding for community projects supporting quality of life in Santa Barbara County. \$1,500,000 of those funds were directed to the Foodbank to retrofit our new South County warehouse in Goleta. Once operational, the warehouse will have the capacity to store more than 750,000 pounds of food, making nearly 585,000 meals available for immediate distribution.

“As the Central Coast’s Representative, my first and foremost responsibility is to deliver real results for our communities and its residents – and today I’m proud to do that again by delivering nearly \$17 million for Santa Barbara County to support projects that will improve our quality of life,” said Rep. Carbajal. “With these funds, we will be able to make critical upgrades that will reduce traffic, renovate public spaces, and improve access to food and clean water across the Central Coast.”



—Congressman Salud Carbajal, 24th District

THE YEAR OF THE SHAREHOUSE



This year, we celebrated the completion of our capital campaign, Building Readiness: Campaign for a Hunger-Free Tomorrow, which **raised \$20M to modify and equip our new Sharehouse facility** in Goleta, to be operational in spring 2024.

In September, the Foodbank held a public “Sharehouse Festival” at the new Goleta location. It was a family-friendly event with Sharehouse tours, food from local chefs, cooking demos, family activities and nutrition education.

The Sharehouse will allow the Foodbank to provide increased access to healthy food and nutrition education for community members countywide. It will also ensure that South County is adequately prepared for emergency food needs during future large-scale disasters.

SHAREHOUSE BENEFITS



Capacity to take in **4 million pounds** of additional food each year



24,000 more square feet
to store food,
3 times larger than the
current space



Space for up to
1.2 M lbs of disaster food storage

Customized spaces
for interactive, hands-on
classes and programming



3 loading docks
for greater efficiency

Nearly **40,000 miles of transportation**
emissions eliminated
each year



Cooler capacity increased
from **28,000 to 32,000 lbs**

AUDITED FINANCIAL STATEMENT FOR FY22

REVENUE	ACTUALS	%
Net Rental Income	\$67,237	0.2%
In-Kind Food Donations	\$176,276	43%
Contributions	\$12,636,697	30.6%
Government Grants & Contracts	\$2,580,706	6.2%
Foundation Grants	\$8,381,371	20.3%
Special Events	\$327,529	0.8%
Other Income	\$754	0.0%
Investment Income	\$917,691	-2.2%
Shared Maintenance/ Earned Revenue	\$463,209	1.1%
Total Revenue	\$41,302,088	100%

EXPENSES	ACTUALS	%
Programs	\$21,251,332	87.4%
Fundraising	\$1,806,709	7.4%
Supporting Services	\$1,249,970	5.1%
Total Expenses	\$24,308,011	100%
Net Surplus	\$16,994,077	

FINANCIAL VALUE OF IN-KIND FOOD

Contributions	\$17,675,684
Distributed	\$16,861,670
Total Assets	\$45,545,657
Total Liabilities	\$8,520,183
Net Assets	\$38,025,474

REVENUE	ACTUALS	%
In Kind Food Donations	\$17,762,276	43%
Contributions	\$12,636,697	30.6%
Foundation Grants	\$8,381,371	20.3%
Other Income	\$2,454,507	5.9%
Rental Income	\$67,237	0.25%
Total Revenue	\$41,302,088	100%



FY23-FY24 BOARD OF TRUSTEES

Christine Bisson, Chair
Charles J.H. Stolar, MD, Vice Chair
Melissa Petersen, Secretary
Jessica Moitoza, Treasurer
George Bean
David Bishop

Peter N. Brown
Ted Bruckner
Yvette Cope
Timothy Harrington (FY23)
Donald E. Lafler
Carol Olson

Elizabeth Sanchez (FY23)
Claire Sheehy (FY23)
Mónica Solórzano
Barry Spector

FoodbankSBC.org
(805) 967-5741

North County Facility 490 West Foster Rd. • Santa Maria, CA 93455
South County Facility 4554 Hollister Ave. • Santa Barbara, CA 93110

[f FoodbankSB](#)
[f FoodbankSBEspanol](#)
[i FoodbankSBC](#)
[t FoodbankSBC](#)
[y Foodbank SBC](#)
[in Foodbank of Santa Barbara County](#)

WORKING TOWARD A BETTER TOMORROW



From December 2022 to June 2023, the Foodbank of Santa Barbara County (FBSBC) engaged staff, the board of directors, community leaders, supporters and local funders for the purpose of advancing the strategic direction of our organization. As our mission and vision state, we are committed to transforming the health of Santa Barbara County by providing food and nutrition education. This five-year plan builds on the many strengths of the organization, including our ability to respond to the needs of our neighbors, offer innovative programming together with our partners, and realize a high level of community engagement and support.

OVER THE NEXT FIVE YEARS, WE WILL:

- **REALIZE** the vision for the Sharehouse and the Nutrition Resource Center as the beating heart for food security and nutritional health equity countywide
- **INNOVATE** and **EVOLVE** the Foodbank to meet the changing food needs of the county during the next five years, including the key new area of offering healthy prepared meals
- **UNLEASH** the potential of our 200+ member agencies and programs to be deeper partners in building food security and keeping our communities resilient in times of disaster
- **BUILD** the internal capacity and capabilities of the Foodbank as the central hub organization that will enable us to achieve these goals

“Over the past eight months, we’ve engaged in collaborative efforts with key internal and external stakeholders to create the five-year strategic plan for the Foodbank of Santa Barbara County. The plan is dedicated to ensuring equitable access to nutritious foods for all members of our community. Together, we’ve formulated four strategic goals that are ambitious in their scope, focused on equity and inclusivity, and are taking an innovative approach to ending food insecurity. We look forward to sharing this plan with the community in the coming months.”



—Nathalie Keller, Chief Strategy Officer

OUR GENEROUS DONORS

Thank you for making this critical work possible.

*Generous donors who supported retrofitting the Foodbank's new south county Sharehouse in FY23

** Hunger Relief Champions who donated 30,000 pounds of fresh produce in a single year.

Visionary

Donations of \$1,000,000 or more

Anonymous
The Balay Ko Foundation

Benefactor

**Donations of or valued from
\$500,000-\$999,999**

Anonymous *
Mosher Foundation
Zegar Family Foundation *

Benefactor Food Donors

Albertsons

Advocate

**Donations of or valued from
\$250,000 to \$499,999**

Audrey Hillman Fisher Foundation *

Guardian

**Donations of or valued from
\$100,000 to \$499,999**

Riley and Susan Bechtel
California Department of Social Services
Feeding America
Linda Lorenzen
Mericos Foundation *
Santa Ynez Band of Chumash
Indians Foundation *
Walter J. and Holly O. Thomson Foundation

Guardian Food Donors

ALDI
Costco
Del Monte Fresh Produce **
FoodMaxx
Foods Co.
Spencer's Fresh Markets
Target
Trader Joe's
Walmart
Windset Farms **

Leadership Circle

**Donations of or valued from
\$50,000 to \$99,999**

The Albertsons Companies Foundation
and The Vons Foundation
Anonymous
Bank of America
Ann Carneros
Peter Douglas
Thomas and Doris Everhart
Sister Pius Fahlstrom
Harte Family Fund *
Mark and Dorothy Smith Family
Foundation
Mithun Family Foundation *
Santa Barbara Foundation
Susan and Victor Schaff
Southern California Gas Company
Volentine Family Foundation

Leadership Circle Food Donors

Babé Farms
Bella Vista Produce, Inc. **
Big Lots
Flowers Baking Company
Gold Coast Packing, Inc.
GoPuff-BevMo
Taylor Farms Retail, Inc. **
VONS
Walmart Neighborhood Market

Fruit of the Earth Champion

**Donations of or valued from
\$25,000 to \$49,999**

Alice Tweed Tuohy Foundation *
Anonymous
BRT Charitable Foundation
California Association of Food Banks
City of Santa Barbara
Community Foundation Santa Cruz County
County of Santa Barbara
Crawford Idema Family Foundation

Dancing Tides Foundation
Deckers Brands
Edwin and Jeanne Woods
Family Foundation
Enterprise Rent-A-Car
Goodman Family Foundation *
The Henry Mayo Newhall Foundation
Frederick Herzog III and Marla Mercer
Marcia Ibsen
Donald Jackson
John C. Mithun Foundation
Sharyn Johnson *
Kimco Realty
La Centra-Sumerlin Foundation
John Lewis and Carrie Towbes *
Manitou Fund
Muller Family
Hank and Mari Mitchel
Roy and Ida Eagle Foundation
Chuck and Missy Sheldon
Don and Mary Thompson
United Way of Santa Barbara
Yardi Systems, Inc.
Zegar Family Fund

Fruit of the Earth Champion Food Donors

Bejo Seeds
Coca-Cola Bottling Co.
Dollar General
Driscoll's Associates
Dynasty Farms
Grocery Outlet
Panera Bread
Ralphs Grocery Company
Smart & Final
Sprouts Farmers Market

Garden of Health Ally

**Donations of or valued from
\$10,000 to \$24,999**

Corey and Jill Anderson
Anita L. Stafford Charitable Lead Trust *
Anonymous

Ann Jackson Family Foundation
Gregory Aposperis
Balin Charitable Foundation
Betteravia Farms
Benjamin and Naomi Bollag
Brad Lemons Foundation
Larry Brown
Jim and Kathy Bybokas
Annette and Richard Caleel
Lynne Cantlay and Bob Klein
Marcy Carsey
Denise Chedester and Kenneth Hughes
Chumash Casino Resort
City of Santa Maria
Christian Claiborn
Bart and Cathy Clemens
Nicholas Coe
Connie Frank Foundation
Brian Cordeiro
Sheila and Tom Cullen
Terry Cunningham and Randi Miller
Ann Daniel *
Anina and Rick Davenport
Gwen and Rodger Dawson
The Denver Foundation
Isabel Downs and Robert Warner
Edison International
Judy and Selden Edner
Ella Fitzgerald Fund
Vasanti Fithian
Martha Gabbert
George Hoag Family Foundation
Dan and Debbie Gerber
The Grace Jones Richardson Trust
Bruce Heavin and Lynda Weinman
Richard Heimberg and Karen
Schloss Heimberg
Milt Hess
Lynne Israel
Jackson Family Wines
Marilyn Jenkins
Patricia and Steve Jordan
Michelle and John Kelly



Maia Kikerpill and Daniel Nash *
 The Kirby Foundation
 Kristin Kirby and Kevin Whelan
 Debra Kirschenbaum *
 Kristen Klingbeil-Weis and Karl Weis
 Kroger Co.
 Donald and Sharon Lafler
 Paula and Scott Lewis
 Cindy and Rolly Lokre
 Lillian Lovelace
 M&M Foundation
 Calvin and Phyllis Marble
 Bob and Siri Marshall
 The Maue Kay Foundation
 Meryam and Mike Molyneux
 Montecito Bank & Trust
 Robert and Val Montgomery
 Natalie Orfalea Foundation
 Joseph Nosofsky and Laurie Siegel
 The Okonite Company
 Jack and Sheryl Overall
 Pacific Gas & Electric Company
 Pacific Petroleum California, Inc.
 Pacific Premier Bank
 The Roberts Brothers Foundation
 Carol and David Roe
 Charmaine and Thomas Rogers
 John and Suzanne Sanford
 Santa Barbara Housing
 Assistance Corporation
 Ken and Jo Saxon *
 Frank Schipper and Leslie
 Meadowcroft Schipper
 Patricia Ann Smith
 Eunice Stephens
 Stone Family Foundation
 Tres Chicas Foundation

Tryon Company LLC
 Henk and Lenita van der Werff
 Wells Fargo Foundation
 William H. Kearns Foundation
 Julie Willig
 WWW Foundation
 The Zia Group

Garden of Health Ally Food Donors

Beachside Produce LLC.
 Bonita Packaging Co.
 Boskovich Family Farms
 Lassen's Health Foods
 Lompoc Catholic Charities
 Pacific Coast Produce
 Santa Barbara Wine Country Half Marathon
 Santa Maria High School District
 US Letter Carriers Union Santa Maria
 Whole Foods

School of Nutrition Knowledge

Donations of or valued from \$5,000 to \$9,999

Stephen Aizenstat and Maren Hansen
 Suzanne Allen
 American Riviera Bank
 Anonymous
 Arthrex California Technology, Inc.
 B & B Foundation
 Michele Bass and Allen Gersho
 Gunther and Mary Jane Baumgartner
 Ashish Bhutani and Leslie Sweem Bhutani
 Christopher and Heather Biles
 Esperanza and Roy Bird
 Marlys and Ronald Boehm
 Gregory Brody

Lalla and Rinaldo Brutoco
 Susan Burns and Jerry Hatchet
 Buttonwillow Warehouse Company
 California Wine Festival
 Aaron Campos
 CenCal Health
 Les and Zora Charles
 City of Buellton
 Marilyn Clayton
 CoastHills Community Foundation
 Community Health Centers of the Central Coast
 Danchuk Charitable Fund
 John De Phillippo
 Kathleen Diskant
 Madeleine Dossin and Etienne Droulez
 Roger Earls
 Kate Edwardson
 Mary and Robert Ehrmann
 Enterprise Holdings Foundation
 Olivia Erschen and Steve Starkey
 ExxonMobil Production Company
 Ornella Faccin
 Farm Credit West
 The Fenton Family Charitable Fund
 Brad Fiedel
 Victoria Foyt
 J. Scott Francis, Francis Family Foundation
 Frank Schipper Construction Co.
 Melissa and Philip Franklin
 Full Circle Family Foundation
 John Gabbert
 GenOn
 George B. Page Foundation
 Donald and Patricia Green
 Nancy Gunzberg
 Beverly and Joseph Hardin

Betty and Stan Hatch
 Herbert and Gertrude Latkin
 Charitable Foundation
 Cyndee Howard
 Benjamin and Houghton Hyatt
 Imerys
 Carolyn Jabs and David Zamichow
 James Perse Enterprises
 Brad Jendersee
 David Kalt
 Mitchell Kauffman and Joanne Moran
 Jon Kechejian and Sandra Schoolfield
 Elizabeth Kilb
 Elizabeth King
 Judith and Robert Korte
 Jeff and Wendy Lahr
 Margaret Larrabee
 Lompoc Valley Medical Center
 Mark C. Lemons Foundation
 John and Virginia Markel
 Mechanics Bank
 Miriam Michaelis
 Nancy Miller
 Angela Moll
 John Moller and Betsey
 Von Summer Moller
 The Murphy Foundation
 Pardis Nasser and Sherry Shakoori
 Northern Trust Bank
 David and Twyla Olwin
 Orange County Community Foundation
 Preston B. & Maurine M. Hotchkis
 Family Foundation
 Raintree Foundation
 Barbara and Edwin Rosenblatt
 Santa Maria Elks Lodge #1538
 Michael Schmidtchen and Linda Thompson

Scripps Howard Foundation
 Susan Shields
 David and Julie Siegel
 Stephen Simons
 Gary Simpson
 Lucia Snowhill
 Sodexo
 The Solstice Foundation Inc.
 Sotheby's International Realty
 Specialty Plumbing, Inc.
 Mary Lynn and Warren Staley
 Stefanie L. Lancaster
 Charitable Foundation
 Steven and Laura Mayer
 Family Foundation
 Lynn and Richard Sturtevant
 Diane Sullivan
 Joan and Theodore Tanner
 Jean-Jacques and Li-Chin Shen Teng
 Tomchin Family Foundation
 Tri-County Produce
 Trinity Episcopal Church
 US Bank
 Harry and Michelle Van Wingerden
 Wells Fargo Private Bank
 West Coast Financial
 John and Lacey Williams
 John and Samantha Williams
 Jon and Sandra Zellers
 Cara and David Zwarg

Feed the Future Sponsor

Donations of or valued from \$1,000-\$4,999

Leah Aasen
 Matt Abate
 Frank and Toni Abatemarco
 Haytham Abed
 Debbie and George Adam
 Ginger and Justin Adams
 James Ahr
 Catherine Albanese
 Allyson and Todd Aldrich
 Jean Alexander
 All Saints-by-the-Sea Episcopal Church
 Allan Hancock College
 Alice Alldredge
 Altrusa Club of the Central Coast
 Foundation, Inc.
 Adelina Alva-Padilla
 Amazon
 Jo Anne Ambrosino
 Virginia Anders

Andre, Morris & Buttery
 Geoffrey Andrews
 Anonymous
 Anonymous
 Alison Annon
 AppFolio
 Paul Arganbright
 Francis Arnoult
 Laurie Ashton and Lynn Sarko
 K. and Z. Atesmen
 Betsy Atwater
 Robert Atwater
 Michael Avenali
 Doug and Sandy Avery
 B&T Service Station Contractors
 Amy and Glenn Bacheller
 Bernadette Bagley
 Dennis and Stephanie Baker
 Mary Ballard
 Barbara N. Rubin Foundation
 Pascale Bassan
 Mary Baum and Eric Cantlay
 Jan Baumgartner
 Chris Beach
 George and Joy Bean
 Donald Becker
 Mary Becker
 Diane and Jed Beebe
 Drew Behnke and Chloe Thomas
 Adrian and Penny Bellamy
 Arnie and Jill Bellowe
 David Bennett
 Holly Benton
 Ann Bermingham
 Richard Berry
 Rebecca and Robert Betancourt
 Bethel Lutheran Church
 Anthony Biedul
 Christine and Frank Bischof
 Jill and John Bishop
 Donald Bock
 Thomas Boland
 Marie Bonner
 David and Louise Borgatello
 Carol Bosse
 Catherine Bouquet
 Mike and Patricia Bouquet
 Katherine Bower
 Henry and Maureen Bowis
 James Bowman
 Joan Bowman
 Jason Boyatt
 Dave Boyea and Kelly Hunziker

Helen Bradley and Steven Kleiman
 J. Stuart Bratholdt
 Roberta Bratz
 Daniel Braun
 Melissa Braun
 Jeff Bridges and Susan Geston
 Bright Event Rentals LLC
 Brittingham Family Foundation
 Roxanne Brophy
 Charles and Linn Brown
 Cynthia Brown
 David Brown
 Kristina Brown
 Peter Brown and Suzanne
 Tomlinson-Brown
 Brylen Technologies
 Edward and Grace Hilda Buchholz
 John and Sheela Buckley
 Bucy Family Fund
 Aimee and David Buell
 Michael Bunyak
 Pam and John Burke
 Shirley and William Cabeen
 Michael Cage
 Caliber Collision Center
 California Kindness Project
 California Learning Center
 David and Jean Camp
 Louise Campbell
 Joshua Cantrell
 Helga Carden
 Judith Cardinal
 Ann and Tom Carlyle
 Kathleen and Stephen Carmel
 Carpinteria Lions Club
 Dorinda Carr
 Deborah Cass
 Peter Castellanos and Danyel Dean
 Cearnal Collective, LLP
 Christos and Erin Celmayster
 Diane and James Celmayster
 Penelope Chambers
 Sharon Chance
 Carolyn Chandler
 David Chandler
 Peter Cheney
 Ri-Pen and Sylvain Chou
 Frank Chounet
 Linda Chu and Jeffrey Zukin
 City of Goleta
 Gaylen and George Clark
 Jordan Clark
 Nancy Clark

Joal and Patti Clayton
 Marguerite Clipper
 Marian and Stephen Cohen
 Melissa Colborn
 Lori Coleman
 James and Jolene Colomy
 Community Bank of Santa Maria
 Community West Bank
 Sally Cook
 Marni and Michael Cooney
 Mari Anne and William Cooper
 Yvette Cope
 Gene and Rita Corbin
 Ray Cordeiro
 Linda and Mike Cordero
 Amy Corey
 Linda Corley
 Susan and Tony Cossa
 Cottage Health
 Helen Couclelis
 Glynne Couvillion
 James and Rebecca Craig
 Laurette and Richard Crain
 Renee Curtis
 Curvature
 Lauren Cyr
 Katie Dabney
 Thomas Dabney
 Ben Daniel
 Alan Davenport
 Eric Davenport
 Robert Davey
 Phyllis de Picciotto and Stan Roden
 Kathryn and Michael Dean
 Ernie and Joan DeGasparis
 Renee Dejong
 Terry DeMaria
 Sheryl Denbo and Stephen Silverman
 Elizabeth Denison
 Susan DeWit
 Elizabeth and John Dexter
 Anna DiStefano and Deborah Karoff
 Carol Diamond
 Anita Grace Diaz
 Dignity Health Marian Regional
 Medical Center
 The Ding Doctor
 Sarah Dobbs
 Robert Donahue
 Christie Donnelly
 Richard Doolittle
 Glenn and Karen Elaine Doshay
 Ginni Dreier

Maurice Duca
 Suzanne Duca
 Mark Duell
 Gregory and Theresa Duer
 John Duffy
 Susan Duncan
 William Dunlevy
 Thomas DuPar
 Dutch Bros Coffee
 Bradley Eachus
 Matthew Earls
 Ilana Eden
 Garrett and Sherri Ederer
 Leslie Edgerton
 Jettie Edwards
 Leslie Ekker
 Linda and Paul Ekstrom
 Jackie Eldridge
 Julia Emerson
 Karen Engberg
 Joanna and Marcus Engelmann
 John Engle and Carol Vandenberg
 Robert Erickson
 Stephen Erickson
 Nancy Even and Joel Ohlgren
 Jan Everote
 Roberta Faeh
 Marie Fairbanks
 Margaret Fairchild
 Kenneth Falstrom
 Christine and Joel Fancher
 Kenny Fargen
 David Louis Farris
 Barbara Faulkner and Suzanne
 Krieger-Templeton
 Jake Fernandes
 Terry Fernandez
 Filippin Engineering, Inc.
 Phil Fine
 Bruria Finkel
 First Church of God Santa Maria
 First Congregational Church of
 Santa Barbara
 Stanley Fishman
 John Fishpaw
 Susan Flannery
 Christine and William Fletcher
 Nathan Flint
 Barbara Ford
 Merrilllee Ford
 Peter Ford
 Susan Foreman
 Susan Forkush

Wendy Foster
 Cynthia Frank
 Marco Frausto and Narlene
 Capron-Frausto
 Shannon Frew
 Andrew Jackson and Karen Frishman
 Wes Fuerch
 Ines Fuhlrodt
 Susan Fuller
 John Fulton
 Mary Furner
 Deborah and Stuart Fuss
 Donna Gallant
 Evelyn Gamble
 Carmen Garcia
 Elizabeth Gardner
 W. Randall Garr and Laura Kalman
 Christine Garvey
 Pam Gates
 Paul Gawronik
 Bernice and Harris Gelberg
 Mary and Paul Genis
 George C. Karlson Foundation
 Michael Gerenser
 John Gerig
 Inken Gerlach
 John Gherini
 William Gillette
 Arnold Giordano and Anne Flett-Giordano
 Brian and Rebecca Goebel
 Jenai Gold and Eric McPherson
 Golden State Water Company
 Rudolf and Tamar Goldflam
 Mel Goldsmith
 David and Linda Goldstien
 Goleta Presbyterian Church
 Richard Goodstein
 Marianne Gordin
 Gina and Lawrence Gornick
 Margaret Gosfield
 Kimberly Graham
 Beth Grasel
 James and Janet Gray
 Ann and John Green
 Jack Greenbaum
 Nancy Gregory
 Carolyn and James Grenier
 Tammi Gritters
 Mark and Valerie Grivetti
 Mary Margaret Gross
 Arthur and Laurie Gross-Schaefer
 Mark and Maureen Groves
 Grower-Shipper Association

Guild Mortgage
 Antoinette Gump Amorteguy
 Barbara Gural
 Christian and Patricia Hahn
 Dorothy Hamilton
 Doug Hamilton
 Nancy Hamilton
 Sarah Hancek
 John and Katherine Hancock
 Ian Haney Lopez
 Jeffrey and Vicki Harbison
 Perri Harcourt
 Jeffrey and Marilyn Harding
 Hardy Diagnostics
 Vanessa Hargett
 Maureen Harmon
 Jeffrey and Julie Harris
 Anna Harter
 Larry and Nancy Harter
 Victoria Hazard
 William Hazard
 Peter Hazell
 Linda Hearn
 John Hebda
 Ruth Hellier
 Elizabeth Hensgen
 Stephen and Teri Herbst
 Kim Hernandez
 Jane Herner
 Scott Herriman
 Susan C. Hersberger
 HG Insights
 Robin and Roger Himovitz
 Diana and Robert Hinckley
 James and Sandra Hirsch
 Robert and Shauna Hirsch
 Carolyn Hirsig
 Karen Holce
 Cynthia Holcomb
 Holdfast Collective
 Heidi and Rob Holdsambeck
 Gary and Mary Holmes
 Terrance Holt
 Leslie Hope
 Lynne Hopper
 Corinne and Gary Horowitz
 William Howard and Cindy Pitzer
 Dane Hoyt
 David and Susan Hughes
 Barbara Hume
 Robin and Vikki Hunt
 Karl and Nancy Hutterer
 Andrea and Richard Hutton

David Inger
 Intel Corporation
 Hari and Yasmin Iyer
 Emily Izmirian
 Robert Izmirian and Suzanne Smith
 Gerald Jacobs
 Richard Jacoby
 Bernice James and Glen Mowrer
 Carlton James
 David and Linda James
 Von Jansma
 JDX Pharmacy
 Heather Jevens
 Frances and Ken Jewesson
 Diane Johnson
 Janette Johnson
 Michael Johnson
 Johnson Ohana Charitable Foundation
 Sally Jones
 Gerd and Peter Jordano
 Dennis and Katharine Jorgensen
 Deborah Justice
 Gail Kahan
 Douglas Kahn
 Grace Kalal
 Melissa Kannegieter
 Karl Storz Imaging, Inc.
 Donnalyne Karpeles
 Alan Kasehagen
 Alan Katz
 Harry and Maria Kazali
 KCRW
 Frances Keane
 Joe Kearns
 Sharon Keigher and Libe Washburn
 Arturo Keller and Brigitte Serrato
 Keller Williams - Santa Barbara
 James and Julie Kellner
 Mary Kelly
 Lorna Kemmerer
 Margaret Irene Kemp
 Curtis Kent
 Jane and Martyn Kenyon
 Lisa King
 Leslee Kinman
 Diane Kirchner
 Kiwanis Club of Orcutt
 Kiwanis Club of Santa Maria
 Nancy Knight
 Knights of Columbus #5300
 Brian and Kathleen Knowles
 Stan Kokorowski
 Carol Kommerstad-Reiche

Louise Komp
 Michelle Konoske
 Audrie Krause
 Thomas Kren and Bruce Robertson
 Chandra Krintz
 Janet and John Kruger
 John Kunz
 Asher and Elizabeth Kupperman
 John La Puma
 Julie Ladner
 Chris Lancashire
 Richard Lane
 Cynthia and Hugo Lara
 Eric Lassen
 Lazard Foundation
 Leo and Eva Gans Foundation
 Cindy and Steve Leonard
 Daniel Leonardi
 Fran and Mike Lewbel
 Nora Lewis
 Joseph and Lynda Liebman
 David and Dawn Ligon
 Joseph and Mara Lillard
 Marcy Lindbery
 Dora Little
 Karen Littlejohn
 Sheila Lodge
 Marilyn Logsdon
 Stephen Long
 The Looker Foundation
 Robert Loomis and Linda
 Oberlander Loomis
 Loon Point Fund
 Judith Lorimer
 Donald and Maureen Loster
 Carol Love
 Mary and Randal Lum
 Sandra Lynne
 Pamela Macal
 Ruth MacMillan
 Karen Madden
 Maureen Mahoney
 John Majewski
 Craig Mally
 Elizabeth and Robert Manger
 David Mankin
 Mike, Jen, Jacob and Joe Mansbach
 Elizabeth Marchant and Rafael
 Perez-Torres
 Deanna Marchiando
 Xander Marin
 Gertrude Marsi
 Angel and Frankie Martinez

Thoma Martinov
 Joseph Martorana
 A. Michael Marzolla
 Mei Ling Mason
 Elizabeth Matthews
 Jennifer Maupin
 Bruce and Suzanne McAdams
 Albertina McCaffrey
 John McCeney
 McCune Foundation
 Dave McDonald
 Lorraine McDonnell
 Kathryn McGill
 Bonnie and Craig McGinnis
 Jay McGonigle
 Terrance McGowan and Marilyn Wales
 McGowan Guntermann
 Dorothy McIntosh
 Patricia McIver
 Marjorie McKean
 Esther McKinley
 Pam McLean
 John McManus
 Timothy McWilliams
 Deborah and Thomas Meade
 Dana Melideo
 Duncan and Suzanne Mellichamp
 Robert Meloy
 Rebecca Melton
 Franz Mendonsa
 Julie Menicucci
 G. Eugene Merewether
 Frances and Steven Miller
 Ladeen and Stephen Miller
 Lowell Miller
 Nancy Miller
 Sara Miller McCune
 Clare Miner-McMahon
 Clara Miranda
 Bill and Candy Mitchell
 Nandita and Sanjit Mitra
 Elizabeth Miyazawa
 Liz Mocabee
 Mary Monaghan
 Douglas Monk
 Deb Monroe
 Joseph Morales
 Barbara Morgan Green
 James and Mary Morouse
 J. Roger and Meda Morrison
 Irwin Moskowitz
 Cynthia Mullen
 Marcie and Robert Musser

Janet Nancarrow
 Paul Nash
 National Association of Letter Carriers
 of the U.S.A.
 National Association of Retired
 Federal Employees #1087
 Natalie Naumu
 Ryan Naumu
 Murray and Randy Neale
 NECA Santa Barbara County LMCC Fund
 Michel Patricia Nellis
 Network for Good
 New Day Marketing
 Roger Nisbet
 Garth and Kathy Nobis
 John Nobles
 Lisa Nordquist
 Gretchen and Jack Norqual
 Margaret O'Brien
 Robert Ogden
 Ciaran and Marilou O'Halloran
 Jeff Oien
 Olive Branch Ministries
 Donley Olson
 Elizabeth and Leon Olson
 Kris Omar
 Ursula O'Neill
 Stuart Orenstein and Joanne Schoenfeld
 Gail Osherenko and Oran Young
 Joan Oswood
 Anne and Daniel Ovadia
 Pacer Foundation
 George Palmer
 Donna Parks
 Patagonia
 Patterson Self-Storage
 Carl and Karen Payatt
 Pea King Produce, Inc.
 Gloria Pedroza
 Gerald and Pamela Pelton
 Peregrine Capital Management, LLC
 of The Minneapolis Foundation
 Haydee Perez
 Maria Perez Garcia
 Forbes Perkins
 Marcia and Robert Permut
 Dennis Perry
 Lanette and Mike Perry
 Barrie Peters
 David and Stevie Peters
 Stephen Petersen
 Martha Peterson
 Susan Petrovich

Linda Phillips
 Phillips 66 - Santa Maria Refinery
 Charlene Pidgeon
 Marnie and Steven Pinsker
 Allison Platz
 Ann Pless
 Plus1
 Chris and Paul Portney
 Elliott Prager
 Fred and Scheryn Pratt
 Patsy Price
 Jay Prober
 Patricia Ramsey
 Marny Randall
 James Rapp
 Brett and Li-At Rathbun
 Norma Razo
 Daniel Reed
 Elizabeth Reed
 Caryn Reeder
 Harry and Sandra Reese
 Susan-Claire Reid
 Frances and Michael Reighley
 George and Virginia Reilly
 Amy Reinholds
 George Relles
 Ted Rhodes
 Ann and Douglas Ribbens
 Don and Doris Ribble
 Robin Riblet
 George Richard and Jane Westerman
 David and Lynne Richardson
 Robin Rickershauser
 Muriel Ridland
 Christine Riesenfeld
 Beth Rinehold
 Dennis and Mary Ringer
 John and Judy Ritchie
 Keith Rivera
 Rita Rivest
 Robert K. & Barbara J. Straus
 Family Foundation
 James Robertson
 Kathleen Robledo
 Maria-Clara and Roberto Robledo
 Linda Rodriguez
 Daniel Rong
 Levon Ronson Ruess
 Susan Rose
 Peter Rosenblatt
 Alan Rosenblum
 Barbara Rosenblum
 Muriel Ross

Rotary Club of Goleta
 Rotary Club of Goleta Noontime
 Rotary Club of Santa Maria
 RRM Design Group
 Clifford and Phyllis Ruddle
 Russell and Sharon Rumberger
 Beverly Ryan
 Martha Saatjian
 Salin/Woloshyn Family Fund
 Barry Sanchez
 Deborah Sanders
 Gail and Reinhard Sandrock
 Sangham Foundation
 Santa Barbara Aquatics
 Santa Barbara Gift Baskets
 Santa Maria Association of Realtors
 Santa Ynez Valley Foundation
 Carlo and Susan Sarmiento
 Carolyn Savage
 Kathy Scheidemen
 Kathleen Schepanovich
 Otto Schleich
 Jon and Suzanne Schlobohm
 Nancy Schlosser
 John and Thelma Schmidhauser
 Anne and Robert Schowe
 Elisabeth Schreiber and Steven Wolff
 John and MaryAnne Schreier
 Eunice Schroeder
 Erin Schulz
 Helen Schulz
 Bruce and Edna Schumikowski
 Wendy Scott
 Jennifer Scouras
 Sam Scranton
 Kathy Scroggs
 Nini and Peter Seaman
 Vince Sefcik
 JoAnn and John Serpa
 Brian and Deborah Shafritz
 Les and Maureen Shapiro
 Mary and Will Sharp
 Don and Kay Sharpe
 Gerald and Nancy Shaw
 Robert Shelar
 Mary Shepherd
 Marilou Shiells
 Anthony Shih
 Linda and Robert Short
 Martha Siegel
 Sharol and Wayne Siemens
 Richard Silver
 Cynthia and Paul Simmons

Lloyd Simms
 Robert Simon
 Mitchell Sjerven
 Bryce Skaling
 Riley Slack
 Geoffrey Slaff
 Jennifer Slemp
 Eric Smith and Elizabeth Newman-Smith
 Francine and Ralph Smith
 Delia Smith
 Myrna Smith
 Robert Smith
 Michael Smith
 Kevin Smith
 Melbourne Smith
 David and Geneva Smith
 Lisa Smith
 Margaret Smith
 Vivian Solodkin
 Rachel Solomon
 Tana Sommer-Belin
 Sonatech
 Anita and Eric Sonquist
 Kitty SooHoo and Dean Swinson
 Doris and Gerald Sorich
 George and Linda Southwell
 Carolyn and David Spainhour
 Specialty Plumbing, Inc
 Marcia Spranger
 Linda Stafford Burrows
 Robinanne Stancavage
 Starbuck-Lind Mortuary
 Patricia and Stephen Stark
 Richard Startz
 Ann Steinmetz
 Wayne Stelly
 Robert Sternin
 Julie Steyer
 Mary Stoddard
 Tom Stoddard
 Kent Stormans
 Bill Stout
 Pat and Terry Straehley
 Peter Stuyt
 Joan and Robert Sugar
 Marilyn Sullivan
 Jeanne Surber
 Sue Suttner
 Lydia Swanson
 Susan Swider
 Anita Sy and Jack Tiethof
 Jeffrey and Pat Tabala
 Doug and Karen Tait

David Talley
 Priscilla Tamkin
 Kathleen Telleria
 Michael Thomas
 Carol Ann Thompson
 Michael Roy Thompson
 Cameron Thornton
 Donald Thornton
 Greg Tice
 Deborah Tilley
 David and Patricia Tisdale
 Frank Tobe
 Maureen Tolson
 Anne Towbes
 Dara Towers
 Toyon Research Corporation
 Wendi Tuckman
 Kristin Tufvesson
 Joe and Laurel Tumbler
 Robert Turbin and Carol Vernon
 George Turpin
 UBS Financial Services
 Laura Uhrig
 Scott Ullmann
 Inge and Robert Uphoff
 Nancy Upton
 Gene Urban and Amy Zak-Urban
 Paul Valenzuela
 The Valley Club of Montecito
 Women's Golf Association
 Karen Van Buskirk
 Janet Van Epps
 Cheryle Van Scoy
 Johanna VanderMolen
 Christine VanGieson
 Ventura Rentals, Inc.
 Marina Vogel
 Jan von Yurt
 Timothy Walker
 Walmart Market #5658
 Susan Wang
 Mark Ware
 Dorothy and John Warnock
 Watling Foundation, Inc.
 Wealth Enhancement Group
 Jeannette Webber
 Letitia Weber-Ford
 John Weems
 Joe and Vibeke Weiland
 Alan Weiss
 Robert Wenger
 James Whipple
 Kevin and Pegeen White

Benjamin and Mary Wiener
 Kendra Wiggins
 Nancy Wilkinson
 Larry Williams
 Birthe Willis
 Karen and Klaus Wills
 Jane and Timothy Wilson
 Nathaniel Wilson
 Joy Winer
 Glenn Winter
 Nancy Wintersteen
 Karen Wintringham
 Shane Witnov
 Caroline and Edwin Woods
 John Woolley
 Donna and William Wortman
 Michael Wyatt
 Glen Wysel
 Linna Xia
 Barbara and Masen Yaffee
 Wendy Yager
 Stephen John Yates
 Joseph Yob
 YourCause, LLC
 Hsiao-Jung Yu
 Joan and Robert Zukin
 Anna and Dick Zylstra

EVERYONE CAN DO SOMETHING TO FIGHT HUNGER

When you support the Foodbank, you help move children, working families, veterans and seniors in Santa Barbara County from hunger into health. The Foodbank of Santa Barbara County is a 501(c)3 organization: Tax ID # 77-0169214

Donate



Give today to help transform the health of our community. With your support, our community will be stronger than ever!

FoodbankSBC.org/Donate

Monthly Giving Program

When you join the Foodbank family as a sustaining monthly partner, you join a committed group of people helping to end hunger and transform the lives of Santa Barbara County residents through good nutrition.

Foodbank Family Benefits

- Be the first to know about Foodbank news and events via email
- Receive advanced access to tickets and special community benefits
- Be a part of a group that helps the Foodbank fulfill its mission for years to come
- Enjoy hassle-free and safe automatic donations

Contact: info@foodbanksbc.org



Planned Giving



Your will or living trust can offer a way to grow your legacy and help transform the nutritional health of our community and secure the food needs of families for years to come. Make a gift in your will that support causes that make the greatest impact in your community.

Contact: Hannah Webster-Brown
Donor Relations Specialist
805-967-5741 ext. 125
hwebsterbrown@foodbanksbc.org

Corporate Giving



The Foodbank welcomes partnerships with local businesses of all sizes. We value community connections and would love to get to know your business! We have several opportunities available to corporate partners.

Contact: Jenifer Sanregret
Corporate Giving Manager
805-698-0598
jsanregret@FoodbankSBC.org

Volunteer



As a volunteer at the Foodbank, you are providing a valuable service. Our volunteers have an opportunity to support our programs, events, and operations. We are so grateful for the support we receive from our many dedicated volunteers. Consider supporting the Foodbank as a volunteer.

Contact: Kelly Smith
805-729-8309
foodbanksbc.org/give-help/volunteer/
Questions: volunteersb@FoodbankSBC.org



FoodbankSBC.org
(805) 967-5741

North County Facility
490 West Foster Rd.
Santa Maria, CA 93455

South County Facility
4554 Hollister Ave.
Santa Barbara, CA 93110

Follow Us!

[Facebook](#) FoodbankSB [Facebook](#) FoodbankSBEspanol [Instagram](#) FoodbankSBC [Twitter](#) FoodbankSBC [YouTube](#) Foodbank SBC [LinkedIn](#) Foodbank of Santa Barbara County