

Fiscal
Year
2024



COMMUNITY



IMPACT



REPORT



Insights From Our Leadership



Thank you for being an incredible partner in helping to create a community where everyone has equitable access to nutritious food and the skills and education needed to build a strong foundation for good health. This year has been filled with challenges for us, and we have succeeded

in meeting them head-on. We have dealt with a powerful post-Covid, inflation-driven need for our services. As part of our five-year strategic plan, our goal is to distribute the most empowering and wholesome foods we possibly can and as such this year, we have dug deep to purchase more food (over a million dollars worth) needed as donations decline at the local, state, and national levels. We are proud that a significant focus of our work has been on providing culturally appropriate foods and that we have been able to support many small Santa Barbara County farmers by purchasing their crops to help our neighbors. Our challenges were exacerbated by delays in opening our new South County Sharehouse facility. Permitting and construction issues, paired with the increasing cost of building materials, have made the process slower and more expensive than we had hoped. (Not a huge surprise!) Nevertheless, as we once again showcase our ability to be resilient, this amazing facility will open in the winter. The Sharehouse will greatly increase our capacity for storing and sharing healthy food. A few days ago, when I stepped into our new cooler/freezer, it was like being in a big building all by itself. It is gratifying to think that our shelves will soon be crammed with healthy food for those who need it, when they need it. Lastly, our education efforts have grown incredibly across the county as we prepare the next generation of food-literate Santa Barbarians. We will have some fantastic initiatives beginning next year that we cannot wait to share with you.

Erik Talkin, CEO

POP QUIZ!

Question #1: How many ingredients are needed to build and maintain a healthy human body?

Students in my Nutrition Science classes at Allan Hancock College are often surprised to learn that there are more than 40 essential nutrients. The vitamins, minerals, amino acids, fatty acids, water, and energy-yielding nutrients are all vital to the structure and function of our bodies. A lack or imbalance of these nutrients can lead to illness and dysfunction.

Question #2: Where can we find the essential nutrients that our bodies need?

Ideally, we can find all of the nutrients our bodies need by eating and enjoying a wide variety of healthful foods every day. However, many people across Santa Barbara County struggle to get enough food, and especially the nourishing and healthful foods that can help their bodies to thrive. The Foodbank and its many partners and volunteers are working together every day to share healthful foods, nutrition education, and caring connections to promote health.

Bonus Question for Extra Credit: What are three ways you can get involved in Foodbank's mission of turning hunger into health?

Read this report to see a variety of ideas. You'll discover how the Foodbank is making a positive impact in the community, and you can find many options for joining in."

Christine Bisson, MS, RD, Board Chair



Board list

Chair

Christine Bisson, MS, RD

Vice Chair

David Bishop

Treasurer

Melissa Petersen

Secretary

Charles J.H. Stolar, MD

George Bean

Ted Bruckner

Yvette Cope

Donald E. Lafler

Carol Olson

Mónica Solórzano

Barry Spector

Sheraton Kalouria

Magdalena Serrano

Tim Harrington

EMPOWERMENT

OUR VALUES

TEAMWORK

INNOVATION

INTEGRITY

RESILIENCY

OUR VISION

Food Security and Nutritional Health Equity in Santa Barbara County.

OUR MISSION

To end hunger and transform the health of Santa Barbara County through good nutrition.



Thank you for being a critical part of our efforts to ensure food access for all.

The State of Food Insecurity

Inflation, rising food costs and the end of pandemic era support programs have drastically impacted food security in our community.


MORE THAN 1 in 3

42% of the county's households can **not** afford their basic needs.



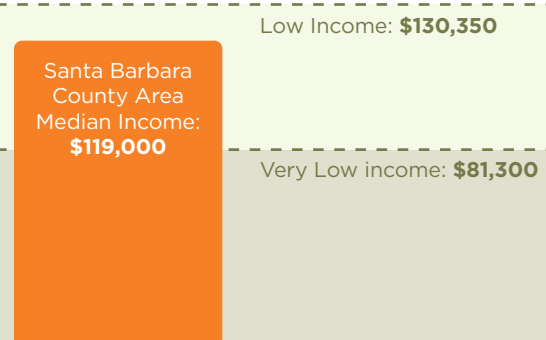
Single mothers are most likely (**8 in 10**) to struggle with basic needs.



96% of households below RCM have at least one working adult.

**The United Way 'Real Cost Measure' study shows what the "real cost" is to cover basic needs in Santa Barbara County and what percentage of the county earns below this real cost threshold.

The median income for all household sizes in Santa Barbara county **fall within the low income bracket**



CA Department of Housing and Community Development (HUD) 2024 State Income Limits Stats for household of 4

California Poverty Measure

Santa Barbara County ranks **second** out of California's 58 counties in its poverty rate, with **17%** of residents and nearly **20%** of children lacking the resources to meet basic needs, including food.

According to the USDA, food prices have **increased** on average by **25%** from 2019-2023. In 2022 alone food prices increased almost **10%**, the fastest growth since 1979. Through this data we can see staple food prices shifting:

Meats, poultry, and fish increased by	Eggs increased by	Dairy products increased by	Fruits and vegetables increased by	Cereals and bakery products increased by
25.7%	32.4%	22.8%	16.6%	27.3%

Eggs and poultry are mainly affected due to a shortage caused by Highly Pathogenic Avian Influenza (HPAI) outbreak and the conflict in Ukraine.

MIT's Living Wage Calculator

For households with two working adults and two children in Santa Barbara County, both working adults must make more than **double the minimum wage** to earn a living wage.

A single parent household with two children must make \$68 per hour to earn a living wage, **more than 4x the minimum wage.**

A single adult household must earn \$32 an hour for a living wage, **double the minimum.**



What we did in Fiscal Year 23-24

215,984

clients served countywide

12,164,313

Total Pounds of Food Distributed

4,796,445

Pounds produce



Food Distribution by City

-	Arroyo Grande*	69,115
3%	Buellton	419,215
4%	Carpinteria	427,268
4%	Goleta**	503,004
2%	Guadalupe	297,457
12%	Lompoc	1,467,940
1%	Los Alamos	76,682
1%	New Cuyama	107,449
-	Nipomo*	233,904
-	San Luis Obispo*	1,532,197
24%	Santa Barbara	2,905,958
41%	Santa Maria	5,027,644
0%	Santa Ynez	43,213
4%	Solvang	489,252

* Outside of SBC, via partnership with SLO Food Bank

** Goleta food pounds includes Isla Vista

In FY24, we intentionally spent over \$450,000 to purchase food for our nutrition education programs. We prioritized sourcing culturally and medically tailored foods, ensuring our neighbors have the dignity of choice and an abundance of produce.

Sourcing culturally and medically tailored foods...

- ✔ is a vital part of supporting health and well-being
- ✔ demonstrates respect and inclusivity
- ✔ improves outcomes for managing medical conditions
- ✔ enhances accessibility
- ✔ ensures nutritious food is used and reduces food waste

By honoring the community's diverse array of cultures, traditions, and dietary practices, we build a trusting relationship with our neighbors.

In FY24, the total pounds of food the Foodbank distributed grew by almost 12%, from 10.8M pounds to 12.1M pounds.



The Uncertain Impact of The Farm Bill

The Farm Bill and SNAP

The Farm Bill is federal legislation that governs food and agriculture programs like SNAP (Supplemental Nutrition Assistance Program) and is reauthorized every five years. The current Farm Bill is extended until December 20, 2024 (1). Different Farm Bill frameworks have been proposed and are being discussed now. The California Association of Food Banks reports that one of the new proposed Farm Bills would cut SNAP funding by \$30 billion over the next decade (2).

The Impact of Potential SNAP Cuts

The Supplemental Nutrition Assistance Program (SNAP) is crucial for helping families put food on the table. However, SNAP benefits are already limited, averaging \$6 per person per day (3).

The proposed SNAP cuts could have a devastating impact on local families and our local economy.

After pandemic SNAP Emergency Allotments ended, the Foodbank's annual service demand grew by over 40%. Additional cuts to SNAP will greatly increase the rate of people who need to utilize the Foodbank, in turn placing immense strain on the Foodbank and our capacity to serve the community.

The Foodbank of Santa Barbara County is committed to ensuring access to nutrient dense, culturally important food for everyone in our community. **We are watching the Farm Bill carefully to prepare for the impact this legislation may have on our community.**



Learn More

For more information on the Farm Bill, visit: <https://www.cafoodbanks.org/2023-farm-bill/>

Equitable Food Access

Ensuring everyone in our community has consistent access to nutritious, culturally relevant food is essential for a thriving community.

Access to nourishing food:

- ✔ Reduces health disparities
- ✔ Boosts educational outcomes
- ✔ Lays the foundation for a vibrant, thriving life

In addition to nourishing our physical bodies, food serves as a profound expression of culture, traditions and history. The inclusion of culturally significant foods enhances not only the nutritional value of meals but also the holistic health of individuals, serving as a affirmation of heritage to heritage, supporting personal identity and strengthening community inclusion.

Through intentional food sourcing, we are enhancing community well-being by prioritizing nutrient dense options that honor cultural preferences and emphasize fresh produce, fostering an inclusive food environment. Our countywide initiatives aim to address the intersecting factors contributing to food insecurity through intentional programming, partnerships and food sourcing.

What keeps you passionate about this work and this community?



"Working with our dedicated and talented staff and volunteers has been one of the most rewarding aspects of my

role. Their hard work and commitment inspire me daily, and it's been a privilege to grow alongside them as we strive to create a more equitable and food-secure community. Supporting our team in their incredible work is not just a responsibility but also one of my highest priorities and greatest sources of joy. I believe that our people are the heart of the Foodbank of Santa Barbara County, and their well-being and development are crucial to our success. As the Director of People and Culture, I am dedicated to creating an environment where every team member feels valued, supported, and empowered to thrive."

Camille Phillips

Director of Human Resources



"What keeps me passionate about this work is having the drive to better serve the community by creating

relationships with our partners, and being utilized as a vessel along with the Partner Services team. I enjoy being out on the front lines with the public, providing better access, equal treatment and accommodation to our neighbors. Working in partnership with partnered agencies creates continual growth and relationships."

Norma Hernandez

Partner Service Capacity Specialist (North County)



Sharehouse, At the Finish Line

The Foodbank's new Sharehouse is almost ready to open, and we couldn't be more excited! This is a key part of our plan to better serve our community and meet growing needs.



More Food

The Sharehouse will allow us to accept up to 80,000 additional pounds of fresh produce per week



Sufficient disaster food storage

Disaster response will improve as we will be able to store up to 1.2 million pounds of food for disaster preparedness in the case of an emergent need.



Nutrition Resource Center to develop, plan, improve and refine all of the Foodbank's food literacy programs

Our Nutrition Resource Center (NRC) will be a space to share nutrition education and food literacy training.



More efficient, sustainable food distribution

- Our food-handling will improve as we reduce the food from being handled 8 different times for food safety and freshness.
- Eliminate the need to truck food from our north county warehouse to south county.
- Reduce transport and associated emissions by over 37,500 miles resulting in reduced expenses, vehicle wear and tear, staff time, and fuel costs.
- Being considerate of our sustainability efforts is something we keep top of mind as the Sharehouse will be solar powered and greatly reduce our fuel emissions.



A centralized location for the convening and training of organizations working in nutrition education

This collective space will provide a myriad of resources for our food handling, volunteer, and educational abilities.

The Sharehouse will be a wonderful resource to our functions and our community overall.

With both the warehouse and office building, our staff will be able to improve operations while forming deeper connections with volunteers and distributors ultimately creating a more efficient, resilient Foodbank.



SHARING FOOD, EDUCATION, HOPE

THANK YOU!

A heartfelt thank you to our generous donors for supporting the launch of our Sharehouse!

VISIONARY

La Centra-Sumerlin Foundation
Riley and Susan Bechtel Foundation
The Balay Ko Foundation
Patricia & Paul Bragg Foundation

CHAMPION

Sheila and Tom Cullen
Anonymous
Zegar Family Foundation
Mosher Foundation

ADVOCATE

Audrey Hillman Fisher Foundation
Ashish Bhutani and Leslie Sweem Bhutani
Jamie and Marcia Constance

GUARDIAN

Kate Edwardson
Hutton Parker Foundation
John C. Mithun Foundation
Mericos Foundation
Walter J. and Holly O. Thomson Foundation
Santa Ynez Band of Chumash Indians
Natalie Orfalea Foundation
Chuck and Missy Sheldon
Ann Jackson Family Foundation
Florence and Laurence Spungen Family Foundation
Montecito Bank & Trust
G.A. Fowler Family Foundation

SUPPORTER

Williams-Corbett Foundation
Hank and Mari Mitchel
Sherry and Don Laffler
Harte Family Fund
Mithun Family Foundation
Mary Thompson and Don Higgins

COLLABORATOR

Edwin and Jeanne Woods Family Foundation
Peter Brown and Suzanne Tomlinson Brown
Maryann Schall
Dr. Carrie Towbes and Dr. John Lewis
Sharyn Johnson
Goodman Family Foundation
Dancing Tides Foundation



We are currently focused on purchasing equipment, fitting the NRC building and developing strategic partnerships. With the help of organizations who provide various elements of food education, we can build exhibits and programs that are accessible and provide comprehensive food education experiences for participants, focusing on youth.

Our new "Kitchen a la Carte" stations are an example of how educational exhibits and programs are designed to be both mobile and accessible to everyone in our community.

These portable cooking carts include a burner, oven, sink, water tanks, extension cords and fire extinguisher. They will be used at the NRC for cooking demonstrations and classes and can be loaded into trucks to bring to partner agency programs.

The Vision for the Nutrition Resource Center's Role in Enhancing Our Children's Nutrition Programs is achieved by providing:

- An equitable hub for the community's youth to learn about nutrition, health, and the food system;
- A meeting and training space for our staff and for our community of partners.

- A space for providers of food resources, education, healthcare, and cultural/social support to come together to learn, collaborate, and create innovative solutions to our shared missions;

- A nutritional testing lab, where we can investigate the latest forms of nutrition and food literacy education and then roll them out into the community through partnerships with trained agencies and volunteers;

Shaping a Brighter Future by Investing in Nutrition



A consistent supply of wholesome foods can keep our bodies sustained with the necessary proteins, vitamins and minerals. Improving health outcomes and lowering healthcare costs.

These benefits are especially important for children, who are most affected by poor nutrition, especially in their early years.

Children who get the right nutrients and learn about healthful eating are more likely to do well in school and share those skills with others in the future.

By focusing on nutrition education in our programs, we are laying the foundation for a stronger, and more resilient community, driving positive, lasting change in Santa Barbara County.

Key Accomplishments for Nutrition Education in Fiscal Year 24

- ✔ In alignment with our strategic plan, we expanded programming by 30%.
- ✔ On average we served each individual neighbor with more pounds of food than the previous year.
- ✔ The number of Older Adult Nutrition education hours and number of lessons grew by 136% from Fiscal Year 2023.
- ✔ The unduplicated number of teenagers participating in our Teens Love Cooking Program grew by 64% from Fiscal Year 2023.
- ✔ The unduplicated number of neighbors served by our Kid's Farmers Market grew by 54% from Fiscal Year 2023.



We know that good nutrition...

- ✔ helps improve brain function, boosting learning and mood
- ✔ helps the body manage stress
- ✔ improves sleep quality

Eating a balanced diet

- ✔ increases energy
- ✔ strengthens the immune system
- ✔ supports healthy growth and development

All leading to increased productivity.

Our Programs



Little Toddler Sprouts-3 Years Old: Emphasizes toddler physical participation, including singing, nature-based re-enactments, and tasting fruits and vegetables, while promoting food literacy with bilingual books and flashcards.

Kids Farmers Market (KFM)-K-6 Children: Provides fresh produce and nutrition education to low-income children, promoting healthy living and development. Food Literacy in Preschool

(FLIP)-4-5 Years Old: Teaches young children from low-income families about healthy eating through fun, interactive lessons while providing food assistance and nutrition education.

Healthy School Pantry (HSP)-5-18 Years Old: Monthly after-school event providing children and families with nutritious food, cooking demos, CalFresh workshops, and more at local schools.

Teens Love Cooking (TLC)-13-18 Years Old: Weekly after-school program that teaches teens essential kitchen skills, nutrition, and food preparation, culminating in a Family Fiesta where they cook a meal for their families.

Picnic in the Park (PIP)-18 Years Old: Provides free summer lunches to kids 18 and under, no registration needed.

Food as Medicine: A free, community-based education series that highlights healthful properties of food that are less commonly discussed in mainstream media.

Agricultores con Buena Salud (Farmworkers and their families): Offers local agricultural workers and their families healthy, culturally relevant food, along with access to nutrition education.

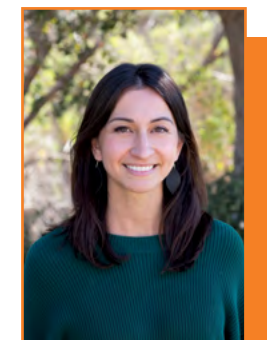
Older Adult Nutrition-60 + years of age or 55+ with a disability: Delivers nutritious groceries and fresh produce bi-monthly to low-income seniors, now focusing on home delivery for those who are homebound.

CalFresh-Low income families: Provides low-income individuals and families with monthly benefits to purchase nutritious food and improve their overall well-being.

FoodRx: Provides cancer patients with nutrient-dense foods, grocery deliveries, CalFresh assistance, and bilingual nutrition education to improve food security and support recovery.

"Nutrition security is imperative for all of our neighbors and is critical for those undergoing cancer care treatment. Patients should not have to choose between their medical care and enough food to eat. The Food Rx program with Mission Hope makes one part of this difficult experience easier for patients by offering convenient access to nutritious food and education through clinic visits and home delivery services."

-Lacey Baldiviez, PhD, Chief Impact Officer

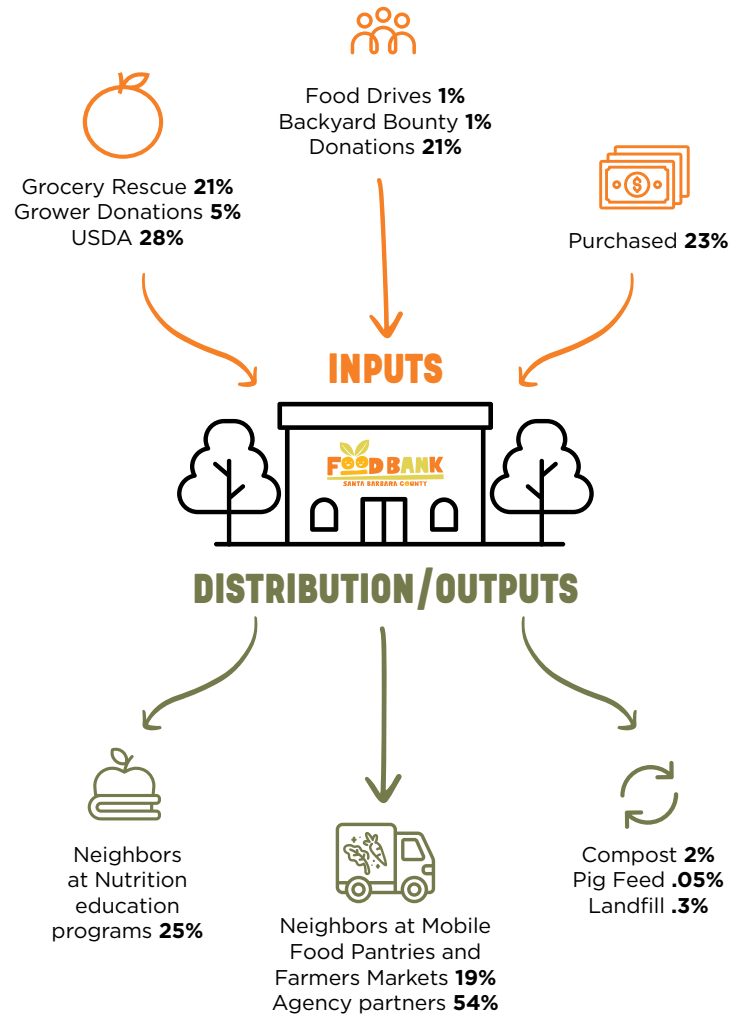


Food Waste Reduction Efforts

The California Department of Resources Recycling and Recovery (CalRecycle) has granted the Foodbank one million dollars to facilitate the composting of organic waste. The grant from CalRecycle will empower the Foodbank to install composting machines at its north and south county warehouses, curbing the disposal of inedible food material at the Tajiguas Landfill in Goleta.

At total capacity, the two composters will divert 4,200 pounds of food waste weekly and up to 218 tons annually from the waste stream. This environmentally conscious effort will significantly reduce the carbon footprint associated with food transportation and waste disposal, contributing to the fight against climate change. Notably, this initiative will also help mitigate the release of methane, a potent super pollutant in the climate.

Shaping a Brighter Future by Committing to Sustainability



Our food recovery programs, Grocery Rescue and Backyard Bounty help to capture edible food that would otherwise go to waste and the landfill and distribute it to neighbors in need of food assistance.

Through our Grocery Rescue and Backyard Bounty Food Recovery programs, in FY24 we recovered **3,078,591** pounds of food equating to:

2,564,326
Meals recovered

3,645.54
tons of CO₂eq avoided- equivalent to 789 passenger vehicles driven for one year

228,639,058
gallons of water saved- equivalent to 346 olympic swimming pools



Promoting Food Waste Education

At the Foodbank of Santa Barbara County, we are dedicated not only to addressing food insecurity but also to promoting sustainable practices through our Nutrition Education plan. To combat food waste, we share practical tips and creative ideas with our community via social media and through our Nutrition Education curriculum.

Our initiatives include showcasing recipes that make use of overripe ingredients, such as transforming brown bananas into creative and delicious snacks rather than discarding them. We also provide guidance on how to utilize every part of our produce. For instance, vegetable peels and scraps, often discarded, can be saved and repurposed into nutritious broths for soups. This approach not only reduces waste but also enhances the flavor and nutrient density of meals.

Additionally, our Nutrition Education programs teach children the importance of composting, highlighting how food waste can be converted into valuable compost rather than ending up in the trash. Through these efforts, we strive to foster a culture of sustainability and resourcefulness within our community, positively impacting both our environment and our food systems.

Together we can do more

We are a member of the Feeding America network of Food Banks and the California Association of Food Banks.

In Fiscal Year 2024 we worked with over 200 partners and programs.

Through our trusted partnerships, we effectively and efficiently work together to meet community needs.



POUNDS DISTRIBUTED

Unity Shoppe	672,105
Catholic Charities - Lompoc	549,239
SYV Community Outreach	410,760
Orcutt Presbyterian Church	381,910
Catholic Charities - SB	331,386
Bethania Lutheran Church	270,949
SB Rescue Mission	259,413
Allan Hancock College	239,662
PHP - Solvang	218,303
PATH	216,184

UNDUPLICATED NEIGHBORS

Allan Hancock College	9,368
American GI Forum	9,312
Unity Shoppe	8,149
Associated Students FB	7,222
Salvation Army - SM	6,693
Bethania Lutheran Church	6,567
PHP - Solvang	5,495
SBCC - Main Campus	5,102
Martha's Meals	5,010
Nipomo Food Basket	4,864



Since 2016, Allan Hancock College has collaborated with the Foodbank to address student hunger.

Initially, we provided avocados to students in need, which proved to be highly successful, prompting us to broaden our offerings to include a variety of food options. Our partnership with the Foodbank is driven by a commitment to ensure that no student faces hunger. Through a weekly food distribution, supplied by the Foodbank, we are able to meet the nutritional needs of our students. Our objective is to create a dependable food resource for students in a supportive and non-judgmental atmosphere.

A student expressed that the weekly food share program has had a positive impact on him and his sister, both of whom are students. Given the increasing prices of groceries, this initiative is crucial. The food share allows them to concentrate on their academic responsibilities and not need to worry about hunger.

-Donna, Hancock Food Share Staff



Unity Shoppe has been a proud partner of the Foodbank for many years, working together to ensure that no one in our community goes without the essential

resources they need. Our partnership began out of a shared commitment to serving Santa Barbara's most vulnerable members, and it has only grown stronger as we continue to align our efforts in providing dignity, respect, and choice to those in need.

The decision to join forces with the Foodbank was inspired by our mutual dedication to combating food insecurity and empowering individuals to lead independent lives. By collaborating, we've expanded our reach and provided even greater support to families, seniors, and individuals who rely on our services. This partnership has been instrumental in helping Unity Shoppe achieve our goals, particularly in ensuring that our clients have access to nutritious food and other essential items.

Our collaboration has had a profound impact on the community, allowing us to launch initiatives that make a real difference. For example, during times of crisis, we've been able to mobilize and distribute food to those affected quickly, thanks to the resources and support provided by the Foodbank. These efforts have not only met immediate needs but have also fostered long-term resilience within the community.

One of the most powerful aspects of our partnership is the countless stories of lives transformed. We've seen firsthand how access to food can relieve the burden on families, allowing them to focus on other areas of their lives, such as education and employment. A memorable moment that stands out is when, during the height of the pandemic, we were able to provide thousands of meals to families who were struggling. This effort was made possible through our close collaboration with the Foodbank, and it underscored the importance of working together in times of need.

Through our partnership, we've learned valuable lessons about the power of community and the importance of flexibility and responsiveness in our service. Together, Unity Shoppe and the Foodbank have shown that by pooling our resources and expertise, we can create lasting change and build a stronger, more resilient community for everyone.

-Angela Miller-Bevan, Executive Director and CEO

Vision of the Future

Here at the Foodbank we envision a future where every neighbor enjoys a happy and healthy life free of food insecurity. By expanding access to food, enhancing food literacy, and promoting sustainable practices, we strive to ensure that all families and individuals in our county can thrive and reach their fullest potential.



In order to take meaningful action on our long-term organizational goals, we are guided by a five-year Strategic Plan created with invaluable input from our staff, partners, and neighbors. The Strategic Plan outlines a series of initiatives to achieve long-term, foundational changes to our county's food support system. Key goals of the Strategic Plan include:

1. Realize the vision of the Sharehouse, ensuring equitable access to meet the needs of our neighbors
2. Meet the growing need for prepared nutritious meals in our community
3. Mobilize a community-wide movement to maximize food security and health equity
4. Grow our operational capacity to innovate and amplify our impact

Fiscal Year 2023-2024 was our first year of the Strategic Plan. We set initial plans in place, including the piloting of delivering prepared meals for seniors, expanding our nutrition education programs for children, conducting feedback surveys and focus groups to hear the needs of our neighbors, and seeking capacity-building partnerships with both service organizations and funders. These efforts will lead to a stronger, more nourished community throughout Santa Barbara County.



Empty Bowls

Our beloved Empty Bowls events were a success again this year.

Our Lompoc, Santa Maria and Santa Barbara committees welcomed their communities for beautiful hand painted bowls, delicious soups and a wonderful time with friends while raising money and awareness for the Foodbank of Santa Barbara County.

Thank you to all of our donors, sponsors, community members and volunteers who work so hard to make these events a success.

Orange Ball

On June 1, 2024 we hosted our first annual 'Orange Ball Gala' at our Sharehouse.

It was a blast! Celebrity chefs Nancy Silvereton and Sheri Yard served up delectable menu items while guests donned orange attire and had the chance to support the Foodbank.

Guests had the opportunity to support Equitable Food Access, Sustainability Initiatives and Nutrition Education. Stay tuned for more exciting events with us in the coming year!

Thank you to our generous donors



*Hunger Relief Champions who donated 30,000 pounds of fresh produce in a single year.

BENEFACTOR FOOD DONORS

Donations of or valued from \$500,000-\$999,999
Feeding America

Benefactor Food Donor

Trader Joe's -Calle Real

ADVOCATE

Donations of or valued from \$250,000 to \$499,999
Joann and Paul Trujillo

Advocate Food Donors

Church of Jesus Christ of Latter-day Saints
Trader Joe's De la Vina
Trader Joe's-North Milpas
Trader Joe's #239
Windset Farms*
Boskovich Farms Inc.*

GUARDIAN

Donations of or valued from \$100,000 to \$499,999
Maryann Schall
Michael and Brigitte Seligman
Riley and Susan Bechtel
Peter Douglas

Guardian Food Donors

Costco #1275
Walmart (Blosser) #5659
Albertson's #6339
Costco #0474
WalMart (Bradley) #5658
Target Goleta
Albertsons (Orcutt) #6394
Albertsons (McCoy) #6348
Walmart #1989,
VONS-Coast Village
Foods Co #779
FoodMaxx (South) #450
Target #T0309
Taylor Farms Retail Inc.*
Del Monte Fresh Produce*
Beachside Produce L.L.C.*
Dynasty Farms*

LEADERSHIP CIRCLE

Donations of or valued from \$50,000 to \$99,999
The Albertsons Companies Foundation
and The Vons Foundation
Calvin and Phyllis Marble
Alice Tweed Tuohy Foundation
La Centra-Sumerlin Foundation
Mark and Dorothy Smith Family Foundation
Dignity Health Marian Regional Medical Center

Leadership Circle Food Donors

Albertsons #354
Albertson's #355
Sprouts Farmer's Market #441
US Letter Carriers Union
CA Association of Food Banks
Albertsons #357
Sprouts Farmers Market #412
FoodMaxx (North) #451
VONS-Cliff Drive
Flowers Baking Company
Albertson's #3324

VONS-South Turnpike
Anonymous
Bolthouse Farms*
Bella Vista Produce Inc*
Driscoll's Associates*
Pacific Coast Produce
Bluebird Mountain Organics

FRUIT OF THE EARTH CHAMPION

Donations of or valued from \$25,000 to \$49,999

Yardi Systems, Inc.
John and Sally Mandel
Sister Pius Fahlstrom
Roy and Ida Eagle Foundation
Southern California Gas Company
Thomas and Doris Everhart
CoastHills Credit Union
Driscoll's, Inc.
The Henry Mayo Newhall Foundation
John and MaryAnne Schreier
United Way of Santa Barbara
Lenita and Henk van der Werff
Deckers Brands
County of Santa Barbara
Dancing Tides Foundation
Marcia Ibsen
Ellen and Tom Orlando
Walter J. and Holly O. Thomson Foundation
Donald Jackson
Bank of America
BRT Charitable Foundation
Connie Frank Foundation
Sheila and Tom Cullen
Dodds Family Trust
Enterprise Rent-A-Car
Harte Family Fund
Jewish Federation of Palm Beach County
Manitou Fund
Anonymous
Judith and Jack Stapelmann
The Goodman Family Foundation
William H. Kearns Foundation

Fruit of the Earth Food Donors

Aldi - #193
Grocery Outlet Lpc
Coca - Cola Bottling Co
Vons #2301
Smart & Final, Carp
Ralph's #10 Magnolia Center
Aldi #37
Foods Co #771
Target La Cumbre
Whole Foods-Santa Barbara
Big Lots #4763
Gelson's Market
Ralph's #680
Post Office Patterson
Gold Coast Packing, Inc
Bejo Seeds
Bonita Packaging Co.
Del Norte Distribution

GARDEN OF HEALTH ALLY

Donations of or valued from \$10,000 to \$24,999
California Association of Food Banks
City of Santa Barbara

Frederick Herzog III and Marla Mercer
Pacific Gas & Electric Company
Don and Mary Thompson
Ann Carneros
David Bishop
City of Santa Maria
Gregory Aposperis
California Municipal Finance Authority
Edwin and Jeanne Woods Family Foundation
Karen Lehrer and Steve Sherwin
Seymour Lehrer
Hank and Mari Mitchel
The Paix Alia Fund
Donald and Susan Mykrantz
Kristen Klingbeil-Weis and Karl Weis
Laura and Geof Wyatt
Donald and Sharon Lafler
Balin Charitable Foundation
Pacific Premier Bank
Brad Lemons Foundation
Lynne Cantlay and Bob Klein
Chevron Corporation
Terry Cunningham and Randi Miller
Edison International
Full Circle Family Foundation
Paul Kerry
Bob and Siri Marshall
Osho Academy
Pacific Petroleum California, Inc.
Santa Barbara Housing Assistance Corporation
Frank Schipper and Leslie
Meadowcroft Schipper
The Grace Jones Richardson Trust
US Bank
Sandy Schoolfield and Jon Kechejian
Maia Kikerpill and Daniel Nash
Ornella Faccin
Judith and Robert Korte
Crawford Idema Family Foundation
Vasanti Fithian
Isabel Downs and Robert Warner
Montecito Bank & Trust
Orange County Community Foundation
Charmaine and Thomas Rogers
Esperanza and Roy Bird
Eric Lassen
Ann Daniel
Ella Fitzgerald Fund
Patricia Ann Smith
Richard Heimberg and Karen
Schloss Heimberg
Christine Bisson
Anita L. Stafford Charitable Lead Trust
Arlington Financial Advisors
Heather and Christopher Biles
Tracy and Michael Bollag
Larry Brown
Lalla and Rinaldo Brutoco
Deborah Carlen
Christian Claiborn
Bart and Cathy Clemens
Anna and Nicholas Coe
Pacific Acoustics North Inc.
Julianna and Tom Dain
Danчук Charitable Fund
Anina and Rick Davenport
Roger Earls
Judy and Selden Edner
John Gabbert

Dennis and Patricia Herendeen
Lynne Israel
Jackson Family Wines
Trish and Steve Jordan
Paula and Scott Lewis
Linked Foundation
Linkedin
Walter Moore
Raintree Foundation
Rita Rivest
Carol and David Roe
Santa Ynez Band of Chumash
Indians Foundation
Susan and Victor Schaff
Eunice Stephens
Ann Jackson Family Foundation
The Diskant Family Foundation
The Roberts Brothers Foundation
TOSA Foundation
Dana White
Julie Willig
Zegar Family Fund

Garden of Health Ally Food Donors

Spencers Fresh Market-Orcutt
Smart & Final #914
Walmart (Department) #2507
Big Lots
Post Office- San Roque
Food Share Inc
Post Office- Carpinteria,
Santa Maria High School District
Montecito Village Grocery
Panera Bread
Post Office - Milpas
Lompoc Catholic Charities
Grocery Outlet-De La Vina
GoPuff
Bethania Lutheran Church
Post Office-Anacapa,
Lassen's Health Foods Santa Barbara
Fresh Bounty,
Rincon Farms Produce
Growers Fresh Farms
Family Ranch,
Charlie Garacocheel
Feather Hill Ranch
Porterville Senior Gleaners
Jasper Eiler (Sweet Shade Farms)
Babe Farms

SCHOOL OF NUTRITION KNOWLEDGE

Donations of or valued from \$5,000 to \$9,999

Melissa Petersen
Bristol Farms
Arthrex California Technology, Inc.
Carol M. Kommerstad
Deborah Carlen
Christian Science Society
City of Buellton
Filippin Engineering
Door Dash - Project Dash
Mitchell Kauffman and Joanne Moran
Angela Moll
Kathleen Telleria
Gary Simpson
The Zia Group
Dan and Debbie Gerber

Elizabeth Kilb
Robin and Roger Himovitz
George B. Page Foundation
Tana Sommer-Belin
Lynn and Richard Sturtevant
Harry and Michele Van Wingerden
Scott Ullmann
Mike, Jen, Jacob and Joe Mansbach
California Wine Festival
Elizabeth King
Terry and Virginia Holt
Olivia Erschen and Steve Starkey
David Inger and Sandra Simmons
The McGonigles
Santa Barbara Foundation
Chuck and Missy Sheldon
Stephen Simons
The Miracle Ticket Fund
John Lewis and Carrie Towbes
Nina Hunt
Kristen Abu-Omar
Jon and Sandra Zellers
B & B Foundation
Jim and Kathy Bybokas
Suzette Chafey
Gail Osherenko and Oran Young
Joyce and Joseph Yob
John De Phillippo
George and Linda Southwell
Sheraton Kalouria and Gary Bradhering
Lucia Snowhill
Santa Barbara Aquatics
Joseph and Marjorie Bailey
Gunther and Mary Jane Baumgartner
Ora Blaney Wood
Crown Point Vineyards
Gregory Brody
Susan Burns
Buttonwillow Warehouse Company
Denise Chedester and Kenneth Hughes
Sarah Cline
Madeleine Dossin and Etienne Droulez
Jackie Eldridge
Gail Elnicky and Richard Untermann
Melissa and Philip Franklin
Frank Schipper Construction Co.
GenOn
Grace Housing, Inc.
Donald and Patricia Green
Brad Jendersee
Johnson Ohana Charitable Foundation
Douglas Kahn
James and Julie Kellner
Margaret Larrabee
Lewis Greenwood Foundation
M&M Foundation
Mark C. Lemons Foundation
Virginia and John Markel
Mechanics Bank
Miriam Michaelis
Northrop Grumman Corporation
Ciaran and Marilou O'Halloran
Jeff Oien
Pajadoro Family Foundation
Ann Pless
Barbara and Edwin Rosenblatt
Sansum Clinic
Michael Schmidtchen and Linda Thompson
Scripps Howard Foundation

David and Julie Siegel
Mary Lynn and Warren Staley
Stefanie L. Lancaster Charitable Foundation
Steven and Laura Mayer Family Foundation
Stone Family Foundation
Joan and Theodore Tanner
Jean-Jacques and Li-Chin Shen Teng
The Denver Foundation
The Fenton Family Charitable Fund
The Maue Kay Foundation
The Tides Foundation
Tomchin Family Foundation
Anne Towbes
Nancy Upton
John and Samantha Williams
John and Lacey Williams
Joan and Robert Zukin

School of Nutrition Knowledge Food Donors

Boy Scouts of America
Smart & Final #391
ORCUTT JR HIGH SCHOOL
Smart & Final-Santa Maria
Santa Maria Bonita School District
Cali-Dental,
SB Wine Country Half Marathon
Smart & Final Express #702
Vallarta (North) #31
Rice Elementary School
Elks Lodge
Katie Hay
Tutti-Frutti Farms
Blake Parsons

FEED THE FUTURE SPONSOR

Donations of or valued from \$1,000-\$4,999

Leah Aasen
Karen Engberg
Clara Miranda
CenCal Health
Rebecca Player
Anonymous
Arthur and Paulette Posch
Norma Razo
Santa Maria Association of Realtors
Shepard Eye Center
Martha Siegel
Jennifer Skytt
Eric Smith and Elizabeth Newman-Smith
Toyon Research Corporation
Turpin Family Charitable Foundation
Ivano Vit
Mark Ware
Watling Foundation, Inc.
Michael Wyatt
Melissa Braun
Roxanne Brophy
Lorraine McDonnell
Betsy Atwater
Caliber Collision Center
Deborah Tilley
Golden State Water Company
John Weems
KCRW
Deb Monroe
Bruce and Edna Schumikowski
John T. Gerig
Elizabeth Matthews
Community West Bank
Rem and Sally Laan
Carol Vernon and Robert Turbin

Timothy McWilliams
Michael Bunyak
Mari Anne and William Cooper
Enterprise Holdings Foundation
Greg Goodman
James and Sandra Hirsch
AnswerForce
Carpinteria Lions Club
Carl and Karen Payatt
Charles and Linn Brown
Barbara Clark
Michael Roy Thompson
Annette and Richard Caleel
Mark and Karen Madden
Sharon Chance
Wendi Tuckman
Bert and Tami Buenik
Dane Hoyt
Arturo Keller and Brigitte Serrato
Daniel Rong
Elizabeth Marchant and Rafael Perez-Torres
Jordan Clark
Mary and Will Sharp
George and Joy Bean
Henry and Maureen Bowis
Kelly Hunziker
Carol and Robert Bress
City of Goleta
Robert and Ann Diener
John Engle and Carol Vandenberg
Jan Everote
Ines Fuhlrodt
Shannon M. Gordon
Cindy Pitzer and William Howard
Robert Izmirian and Suzanne Smith
Margaret and William Morez
Gerald and Pamela Pelton
Precision Auto Body & Painting
Anonymous
Rebecca Player
Anonymous
Arthur and Paulette Posch
Norma Razo
Santa Maria Association of Realtors
Shepard Eye Center
Martha Siegel
Jennifer Skytt
Eric Smith and Elizabeth Newman-Smith
Toyon Research Corporation
Turpin Family Charitable Foundation
Ivano Vit
Mark Ware
Watling Foundation, Inc.
Michael Wyatt
Melissa Braun
Roxanne Brophy
Lorraine McDonnell
Betsy Atwater
Caliber Collision Center
Deborah Tilley
Golden State Water Company
John Weems
KCRW
Deb Monroe
Bruce and Edna Schumikowski
John T. Gerig
Elizabeth Matthews
Community West Bank
Rem and Sally Laan
Carol Vernon and Robert Turbin

Richard Doolittle
John Majewski
Katherine Bower
Ri-Pen and Sylvin Chou
Dutch Bros Coffee
Harry and Sandra Reese
Helen Bradley and Steven Kleiman
Brittingham Family Foundation
Peter Brown and Suzanne Tomlinson-Brown
Edward and Grace Hilda Buchholz
Central Coast Community Energy
Linda Clough
Lindsey Duca
William Dunley
First Congregational Church of Santa Barbara
Christine and William Fletcher
George Isaac Foundation
Greenheart Farms
Elizabeth and Steven Green
Doug Hamilton
Imerys
Karl Storz Imaging, Inc.
Louise Komp
Cynthia and Hugo Lara
Leo and Eva Gans Foundation
Ryan Naumu
Chris and Paul Portney
Preston B. & Maurine M. Hotchkis
Family Foundation
Steven Ridgeway
Leigh Shreves
Impact.com
Randall Solakian
Patricia and Stephen Stark
The Looker Foundation
Maureen Tolson
Janet Underwood
Birthe Willis
Anonymous
Paul and Virginia Chounet
Linda Hearn
Yvette Cope
Jan Baumgartner
Mary Fumer
Joanna and Marcus Engelmann
Barbara Faulkner and Suzanne
Krieger-Templeton
Phil Fine and Beverly Holley
Gary and Mary Holmes
Vince Sefcik
Cynthia and Paul Simmons
Bill Stout
Donald Thornton
LaVon Turner
Mary Stoddard
Michael Brock
Robert Simon
Doris and Gerald Sorich
Corinne and Gary Horowitz
Robert Ogden
JDX Pharmacy
Elizabeth and John Dexter
Eniacy Knight
Dorinda Carr
Ginger and Justin Adams
Sonatech
Tessa van der Werff
Roberta Bratz
Central Coast Pallet Company

Thank you to our generous donors



*Hunger Relief Champions who donated 30,000 pounds of fresh produce in a single year.

George Turpin
Catherine Albanese
The Holdsambeck Family
Holdfast Collective
Allan Hancock College
Andrew Van Sicklen DDS Inc
Robert Atwater
Douglas and Sandy Avery
Mary Ballard
Holly Benton
Maryalice Birk
Anonymous
Vikki and Mike Cavalletto
CoastHills Community Foundation
Glynn Couvillion
Rebecca Craig
Ernie and Joan DeGasparis
Sue Dempster
Anna DiStefano and Deborah Karoff
Gregory and Theresa Duer
Barbara Ford
George C. Karlson Foundation
Aurora and Rick Grimm
Jeffrey and Marilyn Harding
Larry and Nancy Harter
Anna and Jacob Harter
Lynne Hopper
Barbara Hume
Karl and Nancy Hutterer
Grace Kalal
Frances Keane
Sharon Keigher and Libe Washburn
Jane and Martyn Kenyon
Stan Kokorowski
Liu-Yen Kramer and James Ibbetson
Ruth MacMillan
Maureen Mahoney
Mei Ling Mason
Patricia McIver
Esther McKinley
Nandita and Sanjit Mitra
Marian Naretto
Paul Nash
Lisa Nordquist
NS Ceramic, Inc.
David and Twyla Olwin
David and Stevie Peters
Lauren Pinsker
Rancho Sisquoc Winery
Sangham Foundation
Joanne Schoenfeld and Stuart Orenstein
Nini and Peter Seaman
Anthony Yuan Yuan Shih
Anne Siciliano
Annemarie and Robert Simes
Lloyd Simms
Bryce Skaling
Sotheby's International Realty
Marilynn Sullivan
The Vos Family Foundation
Anita Sy and Jack Tiethof
Laurel Tumbler
Timothy Walker
Caroline and Edwin Woods
Ann and Dick Zylstra
Joanne and Joel Shefflin
Orman and Richelle Gaspar
Linda and Mike Cordero
William and Barbara Gillette

Leslie Edgerton
Susan Duncan
Michael MacElhenny and David Wine
Mary and Terry Ramsey
Dennis and Mary Ringer
Anonymous
June and Randall Sutter
Michael Thomas
Denise Allyn
Susan Petrovich
Francine and Ralph Smith
Maureen H. Rochestie
Carl Slate
Caroline Kavanagh
Pledgeling Foundation
Richard Lane
James Whipple
First Church of God Santa Maria
Assisted Home Health
Robert Else
Roger Nisbet
Margaret O'Brien and Mark Brzezinski
John Kunz
Lanette R. Perry
Nathan Flint
Christopher and Judith Johnson
Laura Sentgeorge
Frank Tobe
D. Utley
Shane Witnov
Courtland-Dane Management Group
Shirley and William Cabeen
Melbourne Smith
The Hall Team
Kent and Brier Allebrand
Patagonia
Michael Avenali
Robert and Tory Babcock
Arnie and Jill Bellowe
Anthony Biedul
Beverly and Christopher Boise-Cossart
Louise Campbell
Carol and John Clement
Cochrane Property Management, Inc.
William and Renee Curtis
Elizabeth Denison
Peter Ford
Michael and Patricia French
Mary and Paul Genis
Gina and Lawrence Gormick
Mary Hancock
David Hennerman and Barbara Widmer
Daniel Leonardi
Courtney Jane Miller
Marcia and Robert Permut
Fred and Scheryn Pratt
RARE Electric
Barbara Rosenblum
Roberta Rudnick
Eunice Schroeder
Delia Smith
Carol Ann Thompson
Tisha Weber Ford
Robert Wenger
Nancy Schlosser
Johanna VanderMolen and Robert Nolan
Donna Madjeski
Jeff and Pat Tabala
Jinny Webber

The Ding Doctor
Fox Hill Farm
Muriel Ross
JoAnn and John Serpa
Sara Miller McCune
Macy's La Cumbre Plaza
Caroline Linette Marsh
Chris Beach
Thomas Dabney
Barrett Air Conditioning Co.
Nancy and Ben Minton
Keith Rivera
Tricia Mulgrew Travers
Diane and Mike Giles
Gerry DeWitt
Greg Tice
Marie Fairbanks
Rella and Tom Heslop
Michael Johnson
Stephen Long
Laurel S. Luby and Thomas Beland
Karen Van Buskirk
Linda Rodriguez
Virginia Anders
Barbara and Don Bock
Mike and Patricia Bouquet
Steve and Joan Bowman
Carlos and Rita Campos
Joshua Cantrell
Melissa Colborn
Amy Corey
Bradly Eachus
Susan Forkush
Michael Gerenser
Marianne Gordin
Robin Gridley
Christian and Patricia Hahn
Anonymous
Curtis Kent
Lesla Marsh
Kathryn McGill
Dorothy McIntosh
Joseph Morales
Tracie Musumeci
Gail O'Reilly
Caryn Reeder
Kathleen Robledo
Katherine Saxon
Jennifer Scouras
Vivian Solodkin
Sharie Strasburger
Matt and Susan Swider
Linna Xia
Stephen John Yates
David Talley
Haytham Abed
Elizabeth and Leon Olson
Murray and Randy Neale
Marilou Shiells
Evan Turpin
Bernadette Bagley
Pascale Bassan
Marie Bonner
David and Louise Borgatello
Michael and Kristina Brown
Nancy Clark
Gaylen and George Clark
Lori Coleman
Linda Corley

Lauren Cyr
Sherrri Ederer
Robert Erickson
Brad Fiedel
John Fishpaw
Susan Foreman
Wendy Foster
Marco Frausto and Narlene Capron-Frausto
Christine Garvey
Jack Greenbaum and Carole Lapinsky
Mary Margaret Gross
Dan and Barbara Hodgson
T. Jacqueline Huth
Janette Johnson
Maren and Mark Johnston
Sally Jones
Julie Ladner
Dana Lahodgson
Joseph and Lynda Liebman
Thoma Martinov
Pam McLean
Julie Rose Menicucci
Drew Muir
Cynthia Mullen
Gloria Pedroza
Forbes Perkins
Elizabeth Reed
George and Virginia Reilly
Gayle Robinson
Barry Sanchez
Thomas and Jean Schrock
Lisa Smith
David and Geneva Smith
Jeanne Surber
Priscilla Tamkin
Laura E. Scollin Uhrig
Paul Valenzuela
Jan von Yurt
Karen and Klaus Wills
Nathaniel Wilson
Donna Grubisic
All Saints-by-the-Sea Episcopal Church
Karen Wintringham
Leslee Kinman
Lora Fisher
Carolyn Hirsig
Kendra Wiggins
Lori Lenz
Linda and Mark Williams
Marianell Schaaff
Hilarie Harrison
Lurleen Benzian, MD
Danyel Dean and Peter Castellanos
Carmen Garcia
James and Lynda Grant
Maureen and Mark Groves
Norman Hoffman
Jennifer LeMert
Paul Musgrove
Joan Oswood
Robin Riblet
Beverly Ryan
Wayne Stelly
The Cearnal Collective LLP
David and Linda James
Ted Rhodes and Joni Pascal
Jason LaHatte
J. King
Linda Lorenzen

Carol Olson
Nancy States
Kathryn and Peter Debruynkops
Miss Daisy's Consignment & Auction House
Northern Trust Bank
Eva Ein and Michael Palmer
Carol and Charles Stolar
Heather Jevens
Specialty Plumbing Inc.
Matt Abate
Glen Adams
Jill and John Bishop
Rich and Sierra Cagley
James Carlson
David Chandler
Shannon and James Frew
Beth Grasel
J. Ken, LLC
Carolyn Harley
Scott Herriman
Celeste Kamae-Gale
Marianne Marsi
David Newsom
Catering Connection
Dennis Perry
Kathy Rogers
Searchlight Fellowship
Myrna Smith
Tom Stoddard
Nick Swinmurn
La Arcada Investment Corp.
Margaret Gosfield
Mary Headlee
Peter and Susan Cheney
Marguerite Charles
William L. Hazard
Lisa King
Kent Lind
Sandra Lynne
Marjorie McKean
Nicholas and Rosemary Mutton
Hitching Post Restaurant
Kathleen Schepanovich
The Savoy Cafe
Jonah Sulak
Nancy Thatcher
Carolbeth Gibbens
Dawn Valencia
Alan Katz
Richard Berry
Pamela Viale
Wendie Kruthers
Bradley Cowie
Hari and Yasmin Iyer
Joseph A. Abram
AgWest Farm Credit
Allyson and Todd Aldrich
Alice Alldredge
Laurie Ashton and Lynn Sarko
Kemal and Zeynep Atesmen
Amy and Glenn Bachelier
Daniel and Jennifer Baker
Dennis and Stephanie Baker
Barbara N. Rubin Foundation
Robert Beach
Donald and Mary Becker
Diane and Jed Beebe
Dan Beeman
Bethel Lutheran Church

David Bianchi
Carol Bosse
Catherine Bouquet
Daniel Braun
Jeff Bridges and Susan Geston
Joy Bronson and Joe Skorupa
David Brown
Cynthia Brown
Bonnie Brownstein
John and Sheela Buckley
Bucy Family Fund
Aimee and David Buell
Michael Cage
Lou and Mary Cannon
Julie Capritto
Alexandra and Joyce Carasa
Helga Garden
Ann and Tom Carlyle
Casa Dorinda
Maxine Chadwick
Haydn Chambers
Carolyn Chandler
Marcia and John Mike Cohen
Marian and Stephen Cohen
James and Jolene Colomy
Marni and Michael Cooney
Susan and Tony Cossa
Scott and Kathleen Cunningham
Jennifer Cushnie
Nick Swinmurn
Gwen and Rodger Dawson
Kathryn and Michael Dean
Ann and Paul deBruynKops
Renee de Jong
Sheryl Denbo and Stephen Silverman
Phyllis de Picciotto and Stan Roden
Dignity Health Marian Regional Medical Center
Ginni Dreier
Mark Duell
Rob and Susan Dunton
I. Eden
Adrian Eriker
Nancy Even and Joel Ohlgren
Roberta Faeh
Kenneth Falstrom and Kerry Shaughnessy
David Louis Farris
Jake Fernandes
Terry Fernandez
David and Monica Fishman
Merrilee Ford
Patricia Forgey
Cynthia Frank
William Frost
Wes Fuerch
Mark Fugate
John Fulton
Laura Kalman and W. Randall Garr
Bernice and Harris Gelberg
John Gherini
Arnold Giordano and Anne Flett-Giordano
Mel Goldsmith
Sally Gordon
Greco Realty Inc
Ann and John Green
Carolyn and James Grenier
Arthur and Laurie Gross-Schaefer
Dorothy Hamilton
Jeff and Vicky Harbison
Hardy Diagnostics

Jeffrey and Julie Harris
Peregrine Capital Management, LLC
of The Minneapolis Foundation
Victoria Hazard
West Coast Financial
Susan C. Hersberger
Diana and Robert Hinckley
Andrea and Richard Hutton
Gerald Jacobs
Bernice James and Glen Mowrer
Diane Johnson
Dennis and Katharine Jorgensen
Rebecca Kaye
Harry and Maria Kazali
Richard and Lorna Kemmerer
Margaret Irene Kemp
Kinyon Construction
Diane Kirchner
Knights of Columbus #5300
Kathleen and Brian Knowles
Michelle Konoske
Chandra Krintz and Richard Wolski
Julie and Marc Kummel
Louise LaMothe
Randolph Langel and Patricia Stathis
Mark Leffert
Fran and Mike Lewbel
Toyon Research Corporation
Donald and Maureen Loster
First Republic Bank
Angel and Frankie Martinez
Gary Maxwell
Marilyn and Richard Mazess
John McCeney
Patricia McCready
McCune Foundation
Dave McDonald
Lowell Miller
Ladeen and Stephen Miller
Frances and Steven Miller
Bill and Candy Mitchell
Douglas Monk
Cynthia and Danny Montgomery
J. Roger and Meda Morrison
Larry Murdock
Claude Dorais and Lynda Nahra
Catherine Nelson
Richard Nielsen
Garth and Kathy Nobis
John Nobles
Joseph Nosofsky and Laurie Siegel
Harold and Ruth Oliver
Anne and Daniel Ovadia
Grace Pacheco
George Palmer
Maria Perez Garcia
Elizabeth and Robert Perry
Stephen Petersen
Catherine and Tom Pickett
Marnie and Steven Pinsker
Patsy Price
Mary Anne Prince
Mary Pritchard
Erfolg Properties
Holly Rapson
Reverb
Caleb Rhoads
Ann and Douglas Ribbens
Lindsay Richardson

David and Lynne Richardson
Christine and Stefan Riesenfeld
Arthrex California Technology, Inc.
Maria-Clara and Roberto Robledo
Susan Rose
Alan Rosenblum
Rotary Club of Goleta
Rotary District 5240 Foundation
Carolyn Roth
Clifford and Phyllis Ruddle
Martha Saatjian
Salin/Woloshyn Family Fund
Santa Barbara Housing Assistance Corporation
Carolyn and Lee Savage
Otto Schleich
Sam Scranton
Martha Selfridge
Magdalena Serrano
Legs and Maureen Shapiro
Don and Kay Sharpe
Gerald and Nancy Shaw
John Shooley
Dorothy and Chester Smith
Cheryl Smith
Michael Smith
Kevin Smith
David and Patty Smukowski
Kitty Soohoo and Dean Swinson
Shelly Lundberg and Dick Startz
Carole Stewart
Peter Stuyt
Les and Zora Charles
The Valley Club of Montecito
Women's Golf Association
Elise Tripp
Kevin Ummel
Christine VanGieson
Cheryle Van Scoy
Wendy Varnals
Dorothy and John Warnock
Kevin and Pegeen White
William Whitt
Nancy Wintersteen
John Woolley
Donna and William Wortman
Glen Wyse
Wendy Yager
Kenneth and Roberta Ziegler

Feed the Future Sponsor Food Donor
Vallarta (South) #46
The Farmlink Project
Pacifica Graduate Institute
Bimbo Bakeries USA
Food From The Heart Santa Barbara
Food Forward
Rosemary Farms,
Valley Fresh Market
Central West produce
Central City Cooling
Lori Corry
Wally Meneley
Casa del Herrero
Zada Fresh Farms*

Revenue	FY23	Actual % of Total
In Kind Food Donations	15,175,020	53.4%
Contributions	6,435,401	22.7%
Foundation Grants	4,073,050	14.3%
Other Income	2,454,507	8.6%
Rental Income	260,488	0.9%
Total Revenue	28,398,466	100.0%



Thanks to the unwavering support of our community during COVID and beyond, our organization remains financially strong and committed to sustainability. We are poised for future growth, excited about the opportunities ahead, and dedicated to achieving greater success together.

Carrie Wanek, Chief Financial Officer



To view citations, scan:

